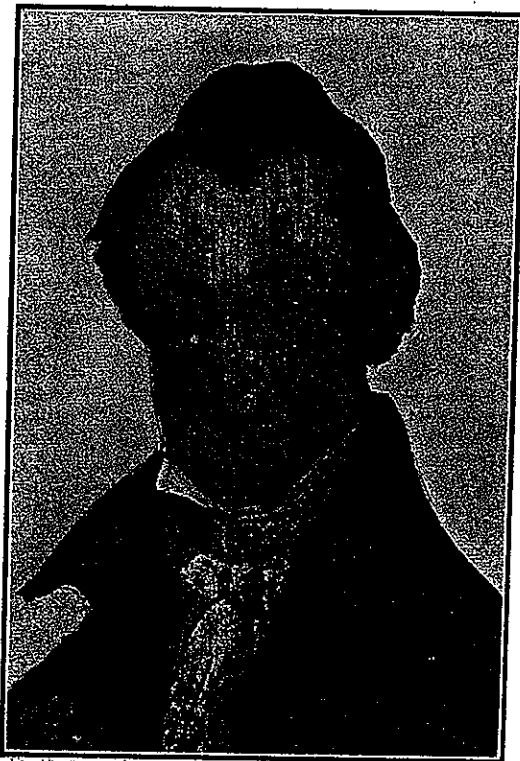


James Richey, who qualified as a Provincial Land Surveyor on March 13th, 1843, was a nephew of Josias Richey, being son of John Richey. He practised at Pakenham.

### JOHN ALEXANDER WILKINSON.



The Wilkinson family originally came from England and settled in Ireland during the religious persecutions, and in that country became numerous and notable. John Wilkinson, the father of John Alexander Wilkinson, became Commissary General for Ireland, and honorably filled that office. He married Mary McDonald; raised a family and died in Ireland.

John Alexander Wilkinson, the subject of this sketch, was the second son of the above mentioned John Wilkinson. He was born on Sept. 14th, 1789, in St. Mary's Parish, Dublin. He served as an officer in the English army during the Peninsular War, and was sent direct from there to

Canada, arriving here just after peace was declared in the war of 1812, being the first of the family to cross the Atlantic. He settled at Sandwich. On retiring from the army on half pay, he turned his attention to civil engineering and land surveying, at the same time holding several responsible public offices. He was for seventeen years a member of the Provincial Parliament for the western district, composed of what is now the Counties of Essex, Kent and Lambton. He was also magistrate, etc.

On October 30th, 1815, he married Frances Hands, daughter of William Hands, formerly sheriff in the County of Essex. She was born on April 18th, 1794, at Detroit, Mich., and died May 10th, 1848. To this union the following children were born:

William Henry Armit, born Oct. 2nd, 1816, died March 20th, 1820, in the suburbs of Quebec.

Mary Anne (wife of Horatio Nelson), born Dec. 6th, 1818; died March 13th, 1886.

Frances, born Dec. 30th, 1820; died April 14th, 1900.

Alexander John Armit, born Oct. 17th, 1822; died May 29th, 1885.

William, born July 18th, 1825; died in Australia Dec. 24th, 1882.

James Hands, born Aug. 31st, 1829; died July 25th, 1892.

Julia Jennet, born Oct. 10th, 1832; died Jan. 4th, 1902.

All of the foregoing were buried at Sandwich, with two exceptions, also the subject of this sketch and his wife.

John Alexander Wilkinson qualified as a Deputy Provincial Surveyor on May 6th, 1835, and practiced at Sandwich until his death on Sept. 17th, 1862. He made some minor surveys for the Provincial Government at Chatham in 1836 and 1840, and at Amherstburg in 1858.

urveyor  
son of

ly ori-  
ngland  
during  
utions,  
ecame  
John  
er of  
inson,  
eneral  
orably  
arried  
sed a  
land.

Wilkin-  
this  
son of  
John  
orn on  
n St.  
1. He  
n the  
g. the  
was  
re to  
e war  
le set-  
ay, he  
ng, at  
e was  
or the  
Essex,

ghter  
. She  
l May  
1: