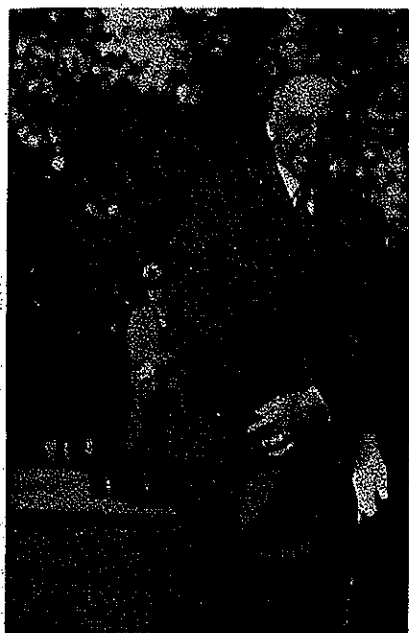


REPORTS

CLAUDE HUGHES WILKINS O.L.S.



Claude H. Wilkins was born at Baysville in Muskoka District July 21st, 1884, son of the late Mr. and Mrs. George Wilkins.

He served his articles of apprenticeship with John Shaw of North Bay and Beatty and Pierce at Pembroke, and qualified as an Ontario Land Surveyor in February, 1916. He was employed by the International Nickel Company at Copper Cliff from 1916 to 1919, when he was employed by the Abitibi Power and Paper Company, Iroquois Falls. He was employed by the Department of Lands and Forests on surveys of resort locations in Algonquin Park, and traverses of lakes and islands in the Rideau Canal system. He established an office

in Gold Pines in 1925 and was engaged on the survey of mining claims in the Red Lake area. From 1927 to 1939 he was engaged in private practice at Toronto and Hastings in Northumberland County. From 1939 to 1944 he was employed on the Saguenay River development at Shipshaw, Arvida and Chicoutimi. In 1944 he retired at Peterborough.

Mr. Wilkins married Margaret Ellen Armstrong in 1914. Their children were George in Edmonton, Alberta, Margaret (Mrs. R. W. Dick) at Hudson Heights, Quebec, Ann (Mrs. Richard Walsh) at Hamilton, Ontario, Mary (Mrs. Edward Faux) at Hamilton. There were fifteen grandchildren.

Mr. Wilkins died at Peterborough on September 21st, 1959.