

Photogrammetry Surveying Department (1966). He became Director General of the Egyptian Survey Authority (1974) and represented Egypt in numerous regional and national conferences. As a Geodetic Specialist with the United Nations (April 1976 to January 1982) he compiled the first Atlas of the major surveying science work in Africa. His commitment to his country and continent of origin was clearly reflected in his efforts to develop and enhance surveying sciences in Egypt and underdeveloped countries.

Professor Wassef used his vast knowledge in geodesy, photogrammetry, cartography and statistics in over 100 scientific articles and research reports. His approach to problem solving was characterized by simplicity and an unusual ability to focus on the basic problem. His critique of new concepts contributed greatly to more effective use of technology. During his professorship in Erindale College, University of Toronto (September 1983 to October 1995) he was active in the fields of geodesy, satellite positioning and recent crustal movements. He received the Mescherikov Memorial Medal in 1991 for his work in the latter field.

Professor Wassef was a dedicated teacher. He enjoyed teaching and encouraged several students to pursue advanced studies, supported their academic development and nurtured their desire to learn. His dedication and commitment remained strong - to the point of resisting cancellation of his weekly lecture scheduled the day prior to his death. As one of his student's noted, his smile, positive stance and enormous energy inspired his students.

Professor Wassef's life will be remembered most by his strong commitment towards his work, students, family, university, country, and towards those who were less fortunate and less privileged. He believed in the potential of every human being and provided the support which many junior colleagues needed. As Professor Wassef used to say, "Those who forget their past, lose their future." And true he was to his past and to developing a brighter future through dedication, hard work and kindness. Attallah Wassef, dead at the age of 74, will be dearly missed.

RICHARD FRANCIS WEATHERBE **1944 - 1995**

by Janet Weatherbe

Richard Weatherbe was born in Regina, Saskatchewan on June 30, 1944. His family moved to St. Catharines, Ontario shortly after the end of the war and he grew up there. He attended St. Catharines Collegiate and graduated in 1963. He joined the Canadian Army as an Officer Cadet and after leaving the Army in 1967 started pursuing his interest in surveying. He was commissioned as an Ontario Land Surveyor in 1971.

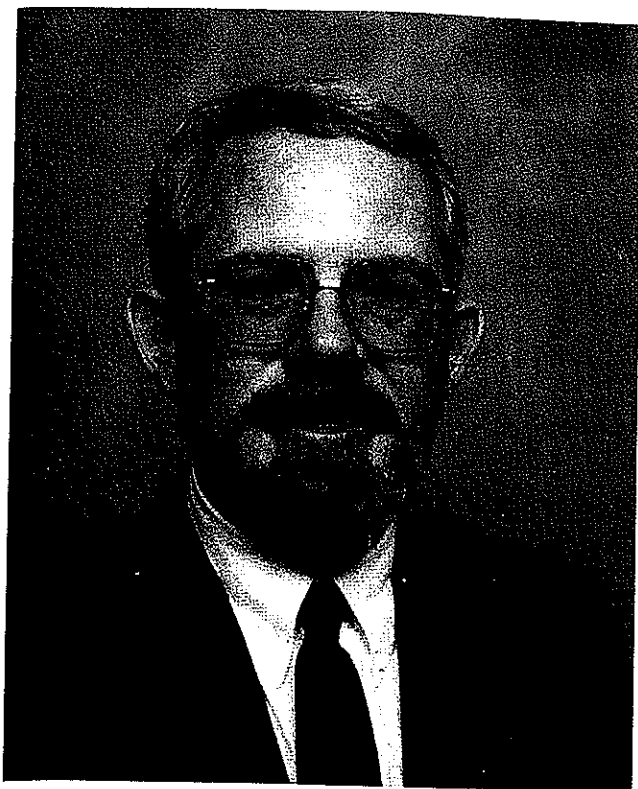
general of the regional and s (April 1976 science work was clearly in Egypt and

try, cartogra- His approach ility to focus atly to more lege, Univer- the fields of ved the Mes-

d encouraged development nained strong the day prior nd enormous

ment towards who were less nan being and essor Wassef he was to his and kindness.

44. His family d he grew up He joined the 1967 started Ontario Land



Rick was largely self-educated and those who knew him were aware of his prodigious appetite for information and debate. Rick was fascinated by mathematics, history, geography, science fact and fiction and computers. He loved being a surveyor and especially loved solving complex problems. He worked for the late Kerry T. Howe, OLS, in St. Catharines until the mid-70s and then moved to Brubacher Campbell Ltd. in Kitchener where he worked until 1980.

Rick began to pursue his interest in Geographic Information Systems in the early 1980s while working at Marshall Macklin Monaghan. After he moved on to

work at the Ministry of Natural Resources he continued to pursue his interest in GIS and completed his Bachelor's degree in Geography at the University of Waterloo in 1988. He then moved to Michigan and completed his MBA at the University of Michigan. Following the completion of his MBA he realized one of his dreams which was to work for ESRI in Redlands, California. When his wife was transferred to the Buffalo area he left ESRI and began work on his Ph.D. in Geographic Information Systems at the State University of New York at Buffalo. He had just completed the requirements for his degree when he suffered a heart attack while out with friends and died before medical help could reach him.

His wife Jan and daughter Kristin are heart-broken over his loss. Rick was an unusual character, intelligent, witty, fair minded and kind. He had many, many friends of all ages and backgrounds and is greatly missed. His Ph.D. in GIS was officially conferred posthumously in May of 1996.

