

W. R. THISTLE

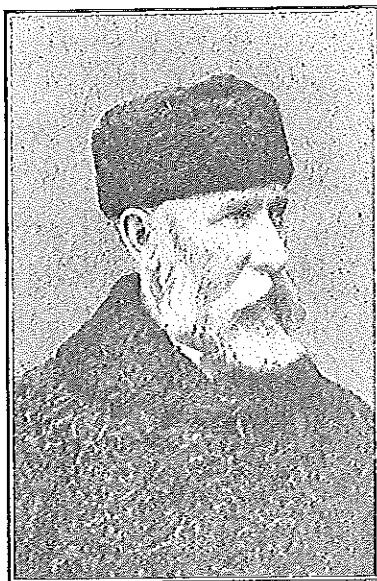
William Ryan Thistle was born at Thistleton near Weston, York County, Ontario, in 1837, his father being Dr. Thistle, after whom the village was named.

He received his education at the Weston Public School and at Upper Canada College.

He served under articles to Colonel J. S. Dennis, then residing near Weston, who at that time had an extensive practice in land surveying throughout the Province of Ontario.

Mr. Thistle passed his final examination as a Provincial Land Surveyor on July 19th, 1858. He made surveys in the Lake Huron District, Lake Superior District and in the vicinity of Toronto. He also made surveys of Ordnance Lands in connection with the Rideau Canal at Ottawa, in 1859.

In 1860-61, Mr. Thistle surveyed a timber berth on the River Severn, and in 1866, Ordnance property for the Provincial Government.



W. R. THISTLE

Two land surveyors were articulated to Mr. Thistle: C. E. Wolff 1873, and A. F. Cotton 1874.

His professional work took him into the Pine timber districts of the Ottawa valley, and becoming acquainted with the business of lumbering, he decided to engage in it, and in 1866 he organized the firm of Thistle, Carswell & Francis.

He made certain subdivision surveys in the City of Ottawa in 1868 and 1869, but after the latter date, his entire attention was given to the lumbering business, which proved very successful.

He was largely interested in saw-mills at Pembroke and later at Hawkesbury, also in extensive timber limits, and his name was well known throughout the Ottawa valley.

In November 1863, Mr. Thistle married Sarah Louisa, eldest daughter of John Egan, Member of Parliament for Pontiac, P. Q., a prominent lumber man at the time. Sir Henry K. Egan, of Ottawa is a son of the late John Egan.

Mr. Thistle died at Ottawa on January 4th, 1892. Three daughters were then surviving: Mrs. R. Gill, Ottawa; Miss Mary Frances Thistle (who died in 1905), and Mrs. D. A. Shirres, of Montreal.