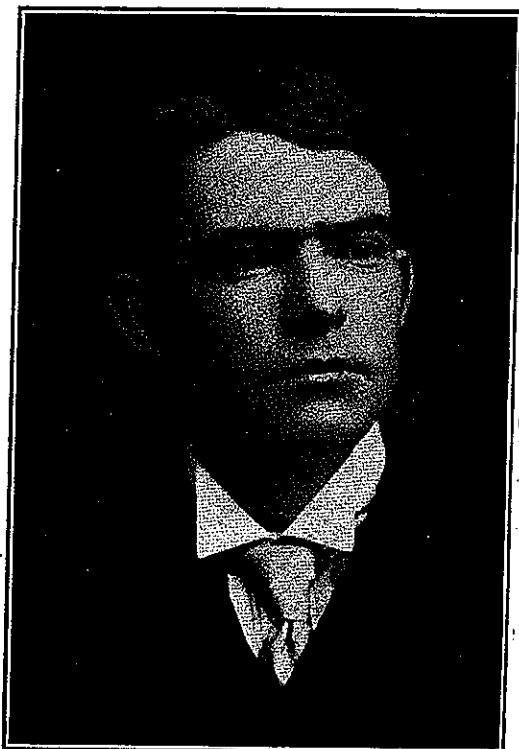


GEORGE LOUIS RAINBOTH



The Rainboth family were of Dutch descent, and settled at St. Andrews, Argenteuil Co., P. Q., removing to Aylmer after October 4th, 1846, on which date George Charles Rainboth, O.L.S., was born (see Report 1914). The father of George C. Rainboth, O. L. S., was George Rainboth, who was born at St. Andrews in 1821, and died at the family home, "Spruce Grove," on the Hull-Aylmer Road in 1902. Edward Joseph, A. J., and Mrs. E. Treau de Coeli, all of Ottawa, are the surviving brothers and sisters of George C.

George C. had the following children: George Louis, born Aug. 17th, 1884, at Aylmer, P.Q.; Ernest Clement, born 1890; Louise Catharine (at home); Pauline Eleanor (Mrs. Edward Miall); Lillian Ann (Mrs. R. L. Squire), and Augustine Mary.

George Louis studied surveying with his father. He qualified as a Dominion Land Surveyor in 1910, and as an Ontario Land Surveyor on May 2nd, 1913. In 1906-07 he was topographer on the re-survey of the Quebec-Vermont International boundary, and in 1908 on the New Brunswick-Maine boundary. In 1909-10 and 11 he was employed on reconnaissance surveys and in levelling on the St. John and St. Francis Rivers, and in 1912 on the topographical survey of Quebec-Maine boundary. He was employed on this work from 1915 to 1918, inclusive. In 1919 he made a subdivision of ordnance lands at Ottawa. When with his father he assisted in farm surveys and sub-

division surveys in Ontario and Quebec, surveys of timber limits on the Gatineau, Cologne, Lievre and Rouge Rivers, also subdivision surveys for the Department of Interior in the Western Provinces.

Since 1919 he was engaged in office work in connection with the International boundary re-survey.

George L. was unmarried. Upon the death of his father on Nov. 2nd, 1910, he assumed the responsibility of the family and household, and bravely carried on. He was a devoted son with a true sense of duty always uppermost in his mind. He lived with his widowed mother at 16 Glen Avenue, Ottawa.

About 9 p.m. on Saturday, Nov. 30th, as Mr. George L. Rainboth stepped from the curb to the roadway in front of the entrance to the Hull Electric Ry. terminal at the Chateau Laurier, he was struck down by an automobile driven by Mr. George E. Heath, and died in the ambulance as he was being conveyed to the hospital, without regaining consciousness.

His funeral was held on Tuesday, Dec. 4th, 1923, from his residence to the Blessed Sacrament Church, the interment being at the Aylmer Roman Catholic Cemetery.

The information for this sketch was furnished by his mother and sister.

a family
scent, and
Andrews,
P. Q., re-
ner after
, on which
rles Rain-
born (see
he father
inboth, O.
Rainboth,
t St. An-
d died at
, "Spruce
Hull-Ayl-
. Edward
d Mrs. E.
all of Ot-
surviving
isters of

the fol-
George
g. 17th,
er, P.Q.;
t home);
(Mrs. R.

He quali-
n Ontario
was topo-
ernational
boundary.
e surveys
rs, and in
boundary.
inclusive.
; Ottawa.
and sub-