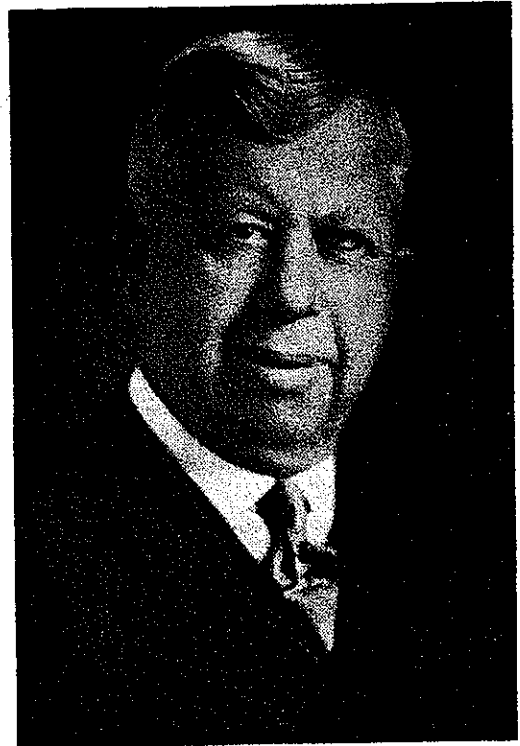


**JOHN JAMES NEWMAN**

By **C. G. Russell Armstrong**

John James Newman, Ontario Land Surveyor and Civil Engineer, was killed instantly in an automobile accident near Woodstock on Thursday, January 27th, 1944, while on his way to Kitchener to visit his daughters.

The late Mr. Newman was born in Mersea Township on March 10th, 1872. He was the son of the late James Newman and his wife, the late Mary Elliott, who settled in Mersea Township in the year 1868. He went to public school there and received his high school education in the City of Windsor, after which he attended the school of Practical Science at the University of Toronto. He obtained his Ontario Land Surveyor's Certificate in the year 1898. In 1894 he was in the employ of his brother, William Newman, who had a private practice in the City of Windsor. In 1898 he formed a partnership with his brother under the name of Newman Brothers. This continued until 1906 when William Newman moved to Winnipeg to engage in the contracting business. From 1906 until January, 1925, Mr. J. J. Newman continued his engineering and surveying practice under his own name. At the latter date C. G. Russell Armstrong, Ontario Land Surveyor, who had been with him for three years previously, was taken as a partner by Mr. Newman and the firm became Newman and Armstrong, which continued until Mr. Newman's death. The late Mr. Newman was County Engineer for the County of Essex and Engineer for many Towns and Townships in the Counties of Essex and Kent and he was successful in building up a large municipal practice and was recognized as an authority on the matters pertaining to municipal drainage.



COMMITTEE ON BIOGRAPHY

He was a member of the Association of Professional Engineers of Ontario and the Engineering Institute of Canada. He was a life member of the Windsor Lodge A.F. and A.M. He was always interested in the work of the Ontario Land Surveyors' Association and served as its President in the year 1928.

He was a man of high ideals in his private and professional life. He was ever ready to lend a helping hand and give a word of advice to whoever required it.

On December 28th, 1904, he married Miss Ethel Maude Thompson of Leamington. There are three daughters from this marriage—Captain Jean Newman with the Army Medical Corps, Lieutenant Margaret Newman with the C.W.A.C., and Mrs. Catherine Dingman. Mrs. Newman predeceased her husband in April, 1943.

Funeral services were held at his late home on Campbell Avenue in the City of Windsor and were conducted by the Rev. Harry Nobles, Pastor of the Temple Baptist Church. Following the services the remains were taken to Leamington where interment was made in Lakeview Cemetery.

Civil  
near  
way

until  
gage  
1925,  
ying  
ussell  
him  
Mr.  
hich  
man  
ineer  
and  
cipal  
tters