

COMMITTEE ON BIOGRAPHY

but was a leader in fencing, swimming and wrestling. He won a gold medal for his year in wrestling and a Varsity "T" for General Athletic Proficiency.

In 1914 he married Irene Marsh of Richmond Hill, who survives him along with sons Peter M. and Ronald M. of Agincourt, and daughter (Elizabeth M.) Mrs. D. E. Kennedy of Kirkland Lake. Three sisters survive: Mrs. Dr. Wm. Schmidt of Kitchener, Misses Eva and Lina Gibson of Willowdale, and three brothers: Wilbert Silas Gibson, O.L.S., Toronto; Erling Gibson, Vancouver; and Vernon Gibson, Willowdale. Harold Holmes Gibson, O.L.S., a brother, died 1946.

"Mort" was a Baptist and a Past Master of Whitby and Agincourt lodge, A. F. & A. M.

The funeral ceremony took place at his home in Agincourt and now he rests peacefully in Pine Hill Cemetery.

ERNEST WESLEY NEELANDS, B.A.Sc., O.L.S., M.E.I.C.

Compiled by H. M. Anderson, O.L.S., from information supplied by Mr. Neeland's widow, a brother, C. F. Neelands, and H. S. Sutcliffe, a former partner.

"Ernie" to us all, was born on April 15th, 1881, at Mount Pleasant, Michigan, U.S.A. His father was Judson Clarke Neelands and his mother Martha Hill (nee Sutcliffe) Neelands. In his early infancy the family moved to Mount Forest, Ontario, and here his Canadian life started. Here he received his public and high school education prior to serving two years as a school teacher.

He entered the University of Toronto in 1904 and graduated in 1907 as a Civil Engineer with the degree of B.A.Sc.

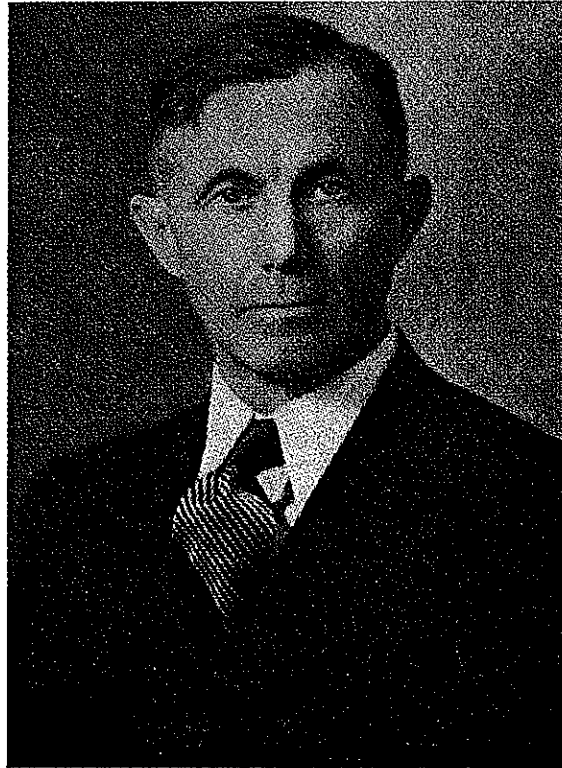
Prior to his graduation his college summers were spent in the employ of J. W. Fitzgerald, O.L.S., of Peterborough. He served his O.L.S. apprenticeship after graduating with Mr Fitzgerald and with John W Shaw, O.L.S., of North Bay. He was admitted to practice as an Ontario Land Surveyor on February 16th, 1909.

In 1908 he married Winifred White of Hawkesbury, who survives him as do also his sons, John Wesley of Haileybury and Thomas George of Chatham, Ontario, and daughter Lucy (Mrs. Harry Nichols) of Toronto.

In September, 1909, he entered into partnership with his cousin, Homer W. Sutcliffe, O.L.S., with office at New Liskeard, Ontario. The north country was developing rapidly at this time; Cobalt was in its full stide in 1909, Gow Ganda was active, Porcupine began in 1909

ASSOCIATION OF ONTARIO LAND SURVEYORS

and Kirkland Lake in 1911. All this meant much surveying of mining claims, townsite subdivisions, then as development expanded there came power plants, transmission lines and pulp and paper mills. All this meant activity for the partnership and Ernie took his full share of the load. He was typical of a true pioneer to whom an 8-hour day or a 40-hour week were things unknown. The great variety of work gave him a breadth of experience denied to most Land Surveyors. Out



of his well rounded experience he acquired a wealth of time saving "short cuts" which he was at all times willing and happy to pass on.

In early 1924 Ernie resigned from the Sutcliffe-Neeland partnership to accept a position as District Engineer for Timiskaming District with the Northern Development Branch of the Ontario Government. In 1926 he was appointed town Engineer of Noranda and as well laid out the model town, etc., there.

From 1927 to 1930 he engaged in private Engineering and Surveying with office in New Liskeard.

In 1930 he was employed as Chief Engineer of roads by the Newfoundland Govern-

ment to establish an Engineering Department, keeping him on the island until 1932, when he again joined the staff of Ontario's Northern Development on location revision from North Bay to Sault Ste. Marie.

In 1934 he joined the staff of Falconbridge Nickel Mines Limited as resident townsite Engineer and Chief O.L.S. of its extensive mining area holdings and remained in such employ until his death. Two leaves of absence were granted during this period; the first in 1936-1937 when he again returned to Newfoundland in a consultative capacity in connection with the Department he had there established. The second was during 1947 to consult in the laying out of the townsites at Kerr Addison Gold Mines.

In April, 1948, Ernie took suddenly ill at Falconbridge and spent some time in Sudbury Hospital, but was able to resume his duties. However, in late June he was taken to Wellesley Hospital in Toronto

COMMITTEE ON BIOGRAPHY

for further diagnosis and treatment where he died on July 10th, 1948. His body was interred in Pine Hill Cemetery.

Ernie was President of our Association in 1946, and those of us who knew him through the years remember him as a quiet, helpful member of our Association, while to all of us will be remembered his efficiency and courtesy as one of its Presidents.

g of
anded
mills.
share
r day
work
. Out
exper-
lth of
cuts"
times
ss on.
ie re-
cliffe-
cept
En-
ning
thern
f the
1926
En-
well
etc.,
O he
neer-
office
ploy-
roads
vern-
n the
thern
larie.
nited
ining
Two
1936-
ative
shed.
own-
spent
uties.
onto