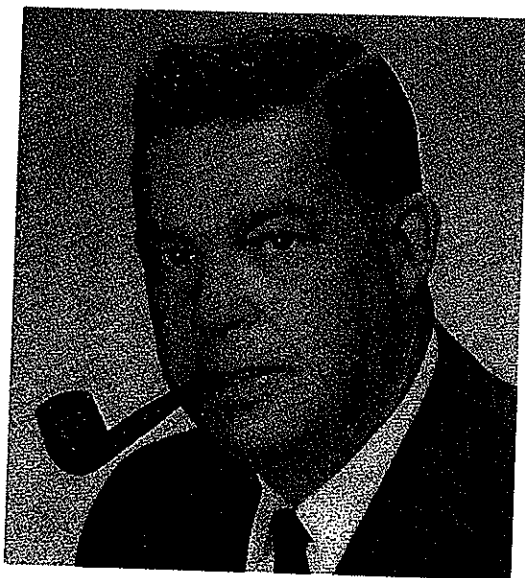


REPORT OF THE BIOGRAPHY COMMITTEE

On the day of his untimely passing, January 30th, 1973, I felt and still feel a great sense of personal loss, since it was my privilege for the past 18 years to work for, serve my articles under and more recently practise with the late Donald C. Smith. His professional qualifications as an Ontario Land Surveyor and Consulting Engineer were equally matched by his tremendous capabilities as a businessman and head of a development firm and his talent in all three fields will be greatly missed by all of those for whom and with whom he worked.



THOMAS EVANS MILWAY O.L.S.
1927 - 1974

Thomas Evans Milway was born in Rouyn, Quebec, July 25, 1927, and educated at Loyola College in Montreal, University of Toronto, and was a graduate of St. Michael's College.

In 1948 he joined the Surveys Branch of the Department of Highways and worked on projects in both northern and southern parts of the Province. He received his commission as an Ontario Land Surveyor in April 1951 after completing his term of articles with Harold S. Howden. In May 1951, in conjunction with George L. Marshall he moved to Sarnia and they established the private practice known as Marshall, Milway. Subsequently, W. A. S. Marshall and Thomas W. Connolly joined the firm. Since 1963 Tom has operated a practice under the firm name Thomas E. Milway, Ontario Land Surveyors, and was engaged in subdivision, planning and aerial photography, and was president of St. Clair Blueprinting Ltd., in Sarnia.

After establishing a practice in Sarnia, Tom became immersed in the affairs of the area. For many years he led the choir at St. Peter's Church, and was president of the Parish Council, a School Trustee, Committee Member of the Planning Board and Committee of Adjustments.

ASSOCIATION OF ONTARIO LAND SURVEYORS

At the time of his death, he was Chairman of the Blue Water Bridge Authority; a member of the Sarnia Rotary Club; Sarnia Wild Life Society; Sarnia Photochromatic Club; Sarnia Rotary Club; the Royal Astronomical Society; and past president of the Sarnia Liberal Association.

Tom is survived by his wife, Stella, a son, Jim, a Masters in Business Administration student at University of Western Ontario and a daughter, Liz, a recent Political Science graduate from McMaster University, two sisters in Montreal, and a brother-in-law, Thomas W. Connolly, Town Surveyor for the Town of Oakville.

REPORT OF THE PUBLIC RELATIONS COMMITTEE

E. Biason of Bolton

Members of the Committee: D. R. P. Barcham; John D. Barnes, Vice-Chairman; Ernest Biason, Chairman; R. E. Clipsham; R. A. Logan; G. F. MacKay; J. K. Mucklestone. Zone Chairman: M. J. M. Maughan.

As a consequence of the replies to the questionnaires published in the fifth edition of *Blaze*, our Committee recommended to the Council of Management that the publication of both 'The Ontario Land Surveyor' and *Blaze* be co-ordinated by either the Ontario Editorial Bureau, the firm responsible for 'The Ontario Land Surveyor', or Tom Gilchrist Limited, which had responsibility for *Blaze*. Council of Management subsequently appointed Tom Gilchrist Limited.

During 1974, we understand there will be six editions of 'The Ontario Land Surveyor' incorporating *Blaze* — three multi-page editions in January, May and September and a newsletter-style edition in March, July and November. After a year, it is expected that *Blaze* will be phased out of the masthead.

With six editions of the combined publication, the Committee feels the Association has an excellent two-way medium for communication — two-way in the sense that the views of Council and Committees may be reported on the one hand, and the views of Regional Groups and individual members may be reported on the other hand.

In 1974, the Committee plans to direct most of its efforts to improving communications *within* the Association in the expectation of contributing to the unity and well-being of it and its membership.