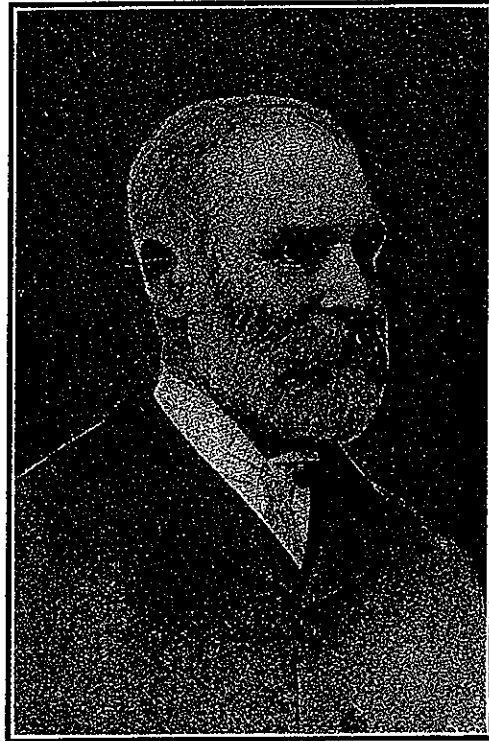


and Richard, and with his sister, Mrs. Gilmour, at the "Croft" in Orillia, Ontario, a charming place on the shores of Lake Couchiching. His death took place on the 16th of May, 1909, and he was buried in the family plot in St. James' Churchyard, Penetanguishene, Ontario. He left no issue. He was a refined and educated gentleman of quiet country tastes, and always a liberal contributor to any good church, charitable or benevolent object.

Alfred Willson, Commissioner of the Canada Company was articled to Mr. Skeeler William Hallen. After serving three full years, he passed his final examination on October 6th, 1866.

H. A. F. MacLEOD

Henry Augustine Fitzgerald MacLeod was the son of the late Captain Martin MacLeod, of Drynoch, Isle of Skye, Scotland, (who served with the 25th Regiment, K.O.B., in the Peninsula, in Canada, in France, and in the West Indies), (and Jane Fry), his wife, of Frybrook, Roscommon, Ireland. He was born at Drynoch on May 29th, 1832, and came to Canada with his parents in 1845. He received his education from private tutors and attended Upper Canada College. He afterwards served his apprenticeship with Mr. John Innis, of Kingston, who was not, however, a land surveyor; and also with C. L. Davies, P.L.S., of London, Ont.



H. A. F. MacLEOD

He was admitted to practice as a Provincial Land Surveyor in this Province on October 11th, 1856. He was engaged upon Railway Surveys, principally upon the Grand Trunk, between 1851-1859.

He made the following surveys of importance for the Provincial Government:

Subdivision of the Township of Cashel, 1860.

Residue of Townships of Limerick and Tudor, 1862.

Posting Hastings Road, 1862.

In 1861, he entered into partnership with the late Henry

Carre, which continued for six years. During the Madoc Gold Field's boom, 1865-1867, Mr. MacLeod and Mr. Carre were active in making surveys in the district.

Early in Mr. MacLeod's career he served in the volunteer militia and passed the first class or field officers' volunteer examination. In 1856, he assisted in raising one of the field companies organized in Upper Canada, and during the Fenian troubles in 1866, he rejoined his Battalion and retired with the rank of Captain in 1868.

In 1867, he accepted a position on the preliminary surveys of the Intercolonial Railway, and in the following year was Engineer in Charge of Construction, which position he held until 1874, when he was transferred to the Canadian Pacific Railway surveys.

For nineteen years, he remained with Canadian Pacific Railway. In 1878, he made an examination for the winter crossing of the Strait of Northumberland and railways to connect the Intercolonial with the Prince Edward Island Railway. In 1879, he made an exploration survey for the Canadian Pacific Railway from the mouth of the Skeena River, B.C., through the Peace River Country to Winnipeg.

Mr. MacLeod was employed on several important arbitrations, and in May 1893, was appointed Chairman of the Lachine Canal Commission of Investigation. His official reports upon the Northwest Territories, the Peace River Country, and the North portion of B. C., contained much valuable information respecting the resources and capabilities of these portions of the Dominion.

In 1903, he was engaged by the Newfoundland Government as an expert engineer in connection with legal proceedings against the Reid Newfoundland Company.

Thereafter he lived in retirement at his home in Ottawa, where he died on June 28th, 1919, in his 87th year.

In 1867, he married Emily, the third daughter of the late Hon. Edmund Merney, of Belleville, who now survives.

Their only child died in New Brunswick when an infant.