

Richard was a good friend to all who knew him, a gentleman and a gentle man. In 46 years of acquaintance, I never knew him to raise his voice to anyone or to speak ill of anyone. No better epitaph can be given.

He left many monuments for us to remember him- monuments of surveying and monuments of character and style.

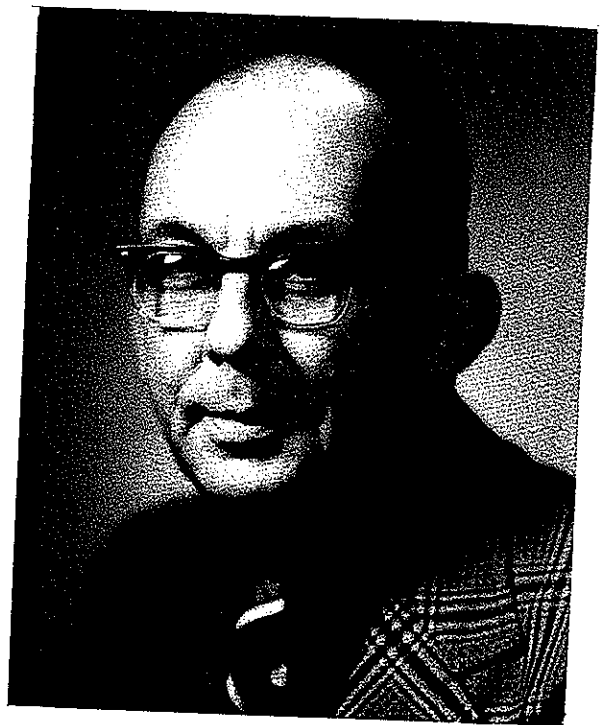
---

**Charles A. MacDonald, O.L.S.**  
**1919 - 1998**  
**by W.B. Tamblyn, O.L.S.**

Charlie was born in Prince Edward Island on October 31<sup>st</sup> 1919. Upon graduating from high school, Charlie spent some years teaching prior to entering the surveying profession.

He worked for the Quebec North Shore and Labrador Railway from 1951 to 1955 spending much of his time in remote areas. This must have been an enjoyable experience for Charlie as he provided us with many colourful tales of these times.

While working for the railway, Charlie obtained his P.E.I.L.S. in 1952.



Through contacts met while working for the Railway, Charlie went to work for Marshall, Macklin Monaghan in 1955 and worked in their Don Mills office until 1965. During this period, he obtained his D.L.S. in 1960 and his O.L.S. and N.S.L.S. in 1961.

In 1965, Charlie transferred to the Galt Office (now in the City of Cambridge) for Marshall, Macklin Monaghan and managed this office until its closure in 1981. At that time Charlie began the firm of C.A. MacDonald Surveying Ltd. and successfully operated same until his retirement in 1988.

Charlie married his wife Margaret on June 25<sup>th</sup> 1966 and resided in Cambridge until they retired to their cottage on Pidgeon Lake.

Charlie enjoyed sailing and maintained a cottage in Prince Edward Island as well as the one on Pidgeon Lake. He was active in the Clan Donald Society, he enjoyed poetry (which he readily recited off to us) and was a devout Christian.

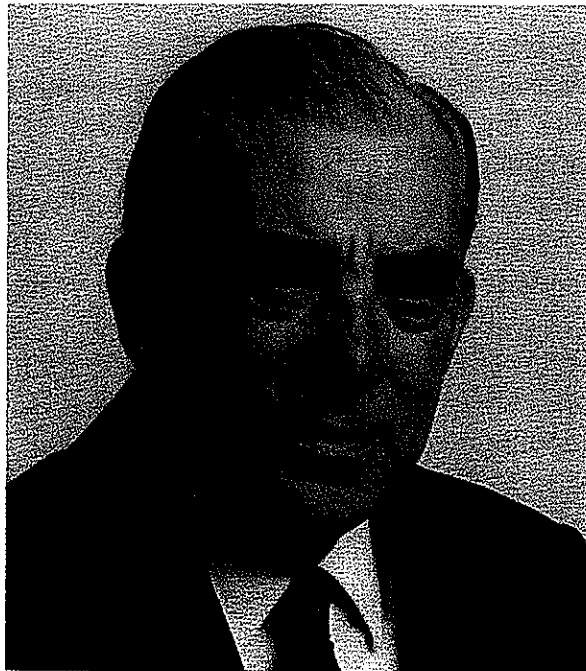
Having worked with Charlie on and off from 1969 to 1988, I have had the privilege of getting to know him as not only a good solid surveyor, who insisted on doing the job right no matter what the cost but also as a man as honest as the day is long. It is no wonder that he was so well respected in the Cambridge community and that our firm today is called MacDonald-Tamblyn Surveying Ltd.

Charlie is buried at his place of birth at Northlake, P.E.I. on a cliff overlooking the ocean. On a calm day you can hear the waves from the sea, the drift of music from the organ and from far away the wail of the pipes.

---

**TADEUSZ (TAD) STASZAK**  
**1915 – 1998**  
**by John Barber OLS**

Tad Staszak was born in Inowroclaw, Poland on January 28<sup>th</sup> 1915. His first association with surveying took place at the age of sixteen when he worked as a Survey Assistant while at the same time studying for his matriculation exams.



After graduating from school, he completed his mandatory military training in 1938. In September 1939, he was recalled to serve in the infantry against the invading German army. He was taken prisoner by the Germans and spent the remainder of the war in a Prisoner of War camp in Germany. Typical of Tad he made the best of an extremely difficult and trying situation, in fact, during his imprisonment he even became a skilled Ping-Pong player. When he was liberated by the Americans in April 1945, he assisted in the organization and administration of the camps of Polish people who were waiting for repatriation. It was at this time that Tad met Maria and after a very short courtship, they were married in July 1945.