

F. H. LYNCH-STAUNTON.

George Lynch-Staunton, K.C., of Hamilton, has furnished us the following information respecting his father, F. H. Lynch-Staunton.

“The late Francis Hardwick Lynch-Staunton was born on August 15th, 1828, in the County of Galway, Ireland, and

was the second son of George S. Lynch-Staunton, D.L., of Clydagh House, Galway, Ireland. He was educated at St. Mary's College, Oscott, England, where he was a fellow student of the great geologist St. George Milbart, the late Cardinal Howard, Lord Acton, the present Professor of History at Cambridge University, and Major General Dormar who was killed some years ago by a tiger at Madras. One of his teachers was a Mr. Hemas, son of the poet Mrs. Felimia Hemas.

His father by royal sign Manual assumed the name of Staunton in compliance with the conditions of the will of his cousin, Sir George L. Staunton, Baronet.”

Mr. Staunton had a large circle of friends, and was a member of the Hamilton Club at the time of his death.

See also Proceedings of 1899, page 223.

FRANCIS HARDWICK LYNCH-STAUNTON.

Francis Hardwick Lynch - Staunton, the second son of George S. Lynch-Staunton, D.L., of Clydagh was born at his father's residence in Galway, Ireland, on August 15th, 1828. He was educated at the famous seminary of St. Mary's, Oscott, England.

He came to Canada in 1854, and received his commission as P.L.S. in October 1856. He practised as a Land Surveyor and Civil Engineer in the County of Bruce for ten years. He was also a Dominion Land Surveyor and was frequently employed in the North-West on Government work, between 1871 and 1883. He resided in West Flamboro', from 1865 to 1876, and in the latter year he went to Hamilton, where he continued to reside and practice his profession until his decease on June 11th, 1899. While in Hamilton, he was engineer in charge of the building of the old high level bridge, and of the H. and D. Railway. In 1860 he was appointed Lt.-Colonel of the 1st Battalion of the Co. of Bruce Militia. He was married to a daughter of the late George Corbett, of Kingston, and left nine children.

FRANCIS HARDWICK LYNCH-STAUNTON

By J. W. Tyrrell

Francis Hardwick Lynch-Staunton was born on the 15th August, 1828, at Cheltenham, England, and was the second son of George S. Lynch-Staunton, D.L., of Clydah House, Galway, Ireland. He was educated at St. Mary's College, Oscott, England, where he was a fellow student of the great geologist, St. George Mibart, the late Cardinal Howard, Lord Acton, Professor of History at Cambridge University, and Major-General Dormar, who was killed by a tiger at Madras. One of his teachers was a Mr. Hemans, son of the poetess, Mrs. Felimia Hemans.

His father, by Royal sign manuel, assumed the name of Staunton in compliance with the conditions of the will of his cousin, Sir George L. Staunton, baronet.

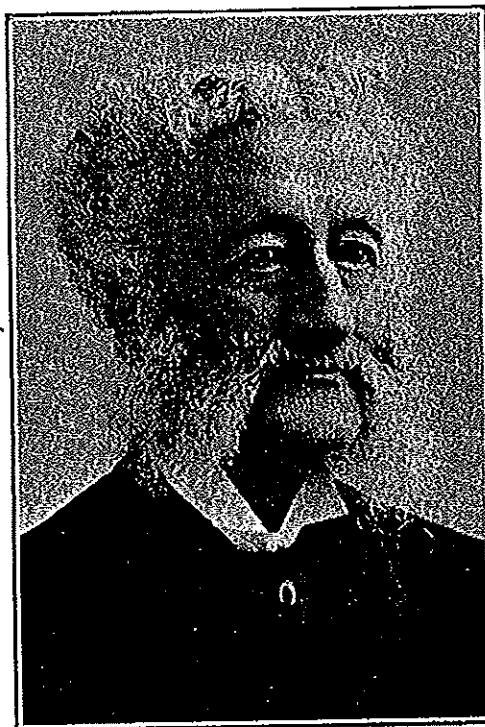
He was offered a Professorship in Chemistry in Trinity College, Dublin, Ireland.

He was engaged on the Ordinance Survey of Ireland for three years before coming to Canada in the year 1854.

He articled himself to John Lindsay, and was appointed a Land Surveyor for Ontario on the 11th October, 1856.

In 1857 he married a daughter of the late George Corbett, of Kingston. She died in 1913. In 1860 he was made Lieut.-Col. of the first Battalion of Militia of the county of Bruce. He practised his profession of Land Surveying and Civil Engineering in Bruce for ten years. He lived in West Flamboro from 1865 to 1876, having had a large farm there. He came to Hamilton in 1876, and resided there from that time.

He was engineer in charge of the building of the old high level bridge, and of the H. and D. Railway. He was fond of reading, riding and shooting.



After an illness of ten months he passed away on the 11th June, 1899, at his residence, 167 Bay Street South, Hamilton, in his 76th year, was buried in Holy Sepulchre Cemetery, Hamilton, and left nine children, viz.: George, the distinguished jurist, and Senator of Canada, also Marcus, Charlotte and Sarah of Hamilton, Alfred, D'Arcy, Charles, Richard and Oliver, of Pincher Creek, Alberta, N.W.T. He also left a large circle of friends who regretted his death, and he was a member of the Hamilton Club. He was a Catholic.

He practiced as a Dominion Land Surveyor, and made the following surveys:

1871—North and East boundaries of Township 13, Range 10, East boundary and part of subdivision of Township 14, Range 10, West of the Principal Meridian, and subdivision of Townships 9 and 10, Ranges 3 and 4, east of the Principal Meridian.

1872—Subdivision of Townships 7 and 8, Range 5, North boundary of Township 7, Ranges 5 and 6, East boundary of Townships 7 and 8, Range 6 and subdivision of parts of Township 14, Ranges 9 and 10, West of the Principal Meridian.

1880—(Staunton and Jones) Subdivision of North boundaries of Township 17, Ranges 31 and 33, West of the Principal Meridian.

1881-82—(Staunton and Jones) Subdivision of Township 14, Ranges 33 and 34, Subdivision of Townships 17 and 18, Ranges 32 and 33, Subdivision of Township 18, Range 31, Subdivision of Townships 25 and 26, Ranges 27 and 28, all West of the Principal Meridian.

1883—Subdivision of Townships 15 and 16, Ranges 10, 11, 12, 13, 14 and 15, West of the Fourth Meridian.
