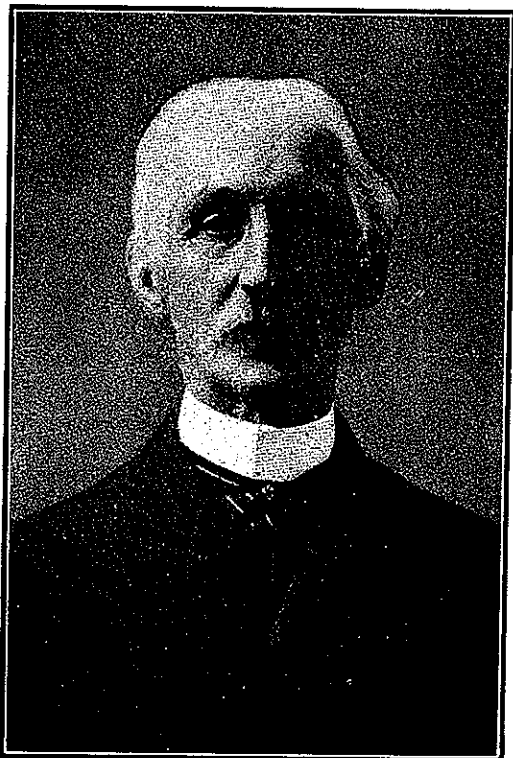


## HENRY LAWE.



The late Henry Lawe was the second son of Colonel Alexander Lawe, of the Royal Engineers, and his first wife, Jane Dobbs, daughter of Councillor Conway Dobbs, of Cushendall, County of Antrim. Henry Lawe was born near Madras, India, on Feb. 28th, 1838, his mother dying at his birth. When about seven years old he was sent home to his grandparents in Ireland, and spent his boyhood at the Glens of Antrim, near Cushendall. On his arrival in Ireland he could only speak Hindustani. He remembered the long voyage from India via Cape Horn. He attended school at Dublin, Isle of Man, Chattenham College, and finished

his education at Paris, where he was during the Crimean War. He remembered seeing Napoleon III. and Empress Eugenie when in her prime. He came to Canada about 1858, and qualified as a Provincial Land Surveyor on October 6th, 1860. He took up his residence at Dunnville, and on December 12th, 1865, married Elizabeth Winifred, second daughter of the late W. A. McCrae, Collector of Customs, Dunnville. For a few years after he resided at St. Catharines, but soon returned to Dunnville, moving to Winnipeg in 1892.

He made the following surveys for the Dominion Government at Ottawa:—1872, Townships in Manitoba; 1882, Township 8, R. 16 and 17 W2, including Townsite of Birtle; 1898, Re-survey Townships 17 R.2, 18 R.3, parts of Townships 17 R. 1 and 3, the townsite of Gimli, all east of the principal meridian, townships in Galician settlement, north of Balmoral, parts of which he surveyed in depth of winter; 1899, Subdivisions of east half of Sec. 11, Township 11, R. 3 W.P.M.; 1901, survey of trails near Westbourne, Man.

For the Provincial Government he made the following surveys:—1864, Rondeau, Lake Erie; 1864, Township of Franklin; 1878, Sheehan tract, Township of Dunn.

About 1890 he was employed on a survey in Virginia and North Carolina with his cousin, Edward Cartwright.

During his long residence at Dunnville he acted as Engineer for several Townships and enjoyed a large local practice.

In 1892 he moved to Winnipeg, where he resided until 1903, when he moved to Ottawa, where he was employed in the Topographical Surveys Branch until his death.

He died at Ottawa on December 10th, 1912, and his widow died in Winnipeg on December 23rd, 1915.

He had two sons and five daughters:—Francis Cartwright, Barrister, Fernie, B.C.; Robert Allen, Dept. of Interior, Ottawa; Winifred Frances, died June 30, 1909, married Robert E. Young, M.L.S., Chief Geographer of Dominion of Canada, died October 23, 1911; Sara, married H. T. Wilson, Toronto; Madeline, married J. S. Evans, Winnipeg; Helen McGregor, died October 9, 1909, married E. W. Ward, now Manager Bank of B.N.A., St. Stephens, N.B.; and Mary Constance, married Commander Percy F. Newcome, R.N., residing in England.

ry Lawe  
n of Col-  
awe, of  
ers, and  
e Dobbs,  
illor Con-  
shendall,  
Henry  
near Ma-  
eb. 28th,  
dying at  
out seven  
ent home  
ts in Ire-  
boyhood  
rim, near  
is arrival  
uld only  
He re-  
g voyage  
pe Horn.  
l at Dub-  
Chatten-  
finished  
he Crim-  
and Em-  
da about  
October  
d on De-  
d daugh-  
Dunnville.  
but soon

Govern-  
2, Town-  
le; 1898,  
ships 17  
principal  
Balmoral,  
Subdivi-  
M.; 1901,