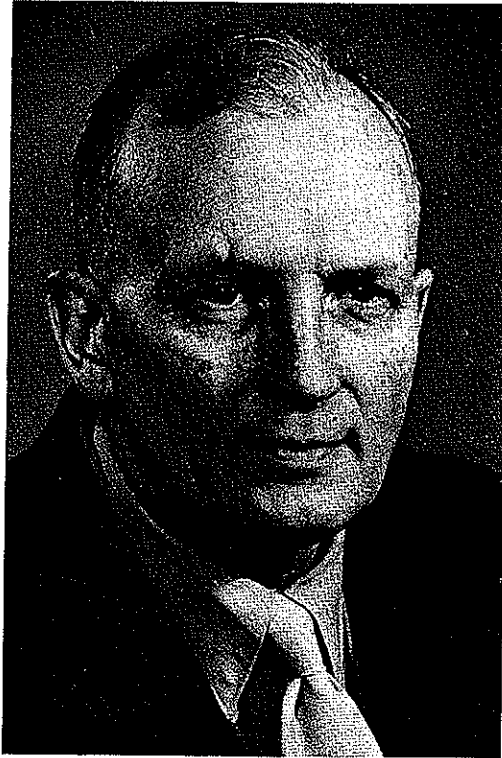


ASSOCIATION OF ONTARIO LAND SURVEYORS



THOMAS WHITTALL KELLY
1906-1974

Born March 2, 1906, Tom was raised and educated in Toronto. He attended Weston Collegiate and graduated from the University of Toronto with his degree in Forestry in 1929.

Subsequent to graduating in Forestry, he worked with Canada Pulp and Paper Company and Abitibi Pulp and Paper Company until he joined the Ontario Department of Highways as a draftsman.

Tom signed up with the Royal Canadian Engineers in January 1940 and was discharged in November 1946. He served overseas and for awhile was attached to the Directorate of Education, Canadian Army. He attained the rank of Captain and continued with the Engineers in the reserve forces.

After serving his articles under N. D. Bennett, with a transfer to W.H. Williams, he was commissioned as an Ontario Land Surveyor on May 27, 1948 while working with Ontario Hydro. Surveying and photogrammetry were just coming together then and Tom worked industriously to bring them closer, his notes on photogrammetry were used by many of the association's articled students.

Just as his vocation blended from forestry into surveying, it gradually worked into the field of estimating, forecasting and scheduling in the Transmission and Distribution Projects Division of Ontario Hydro.