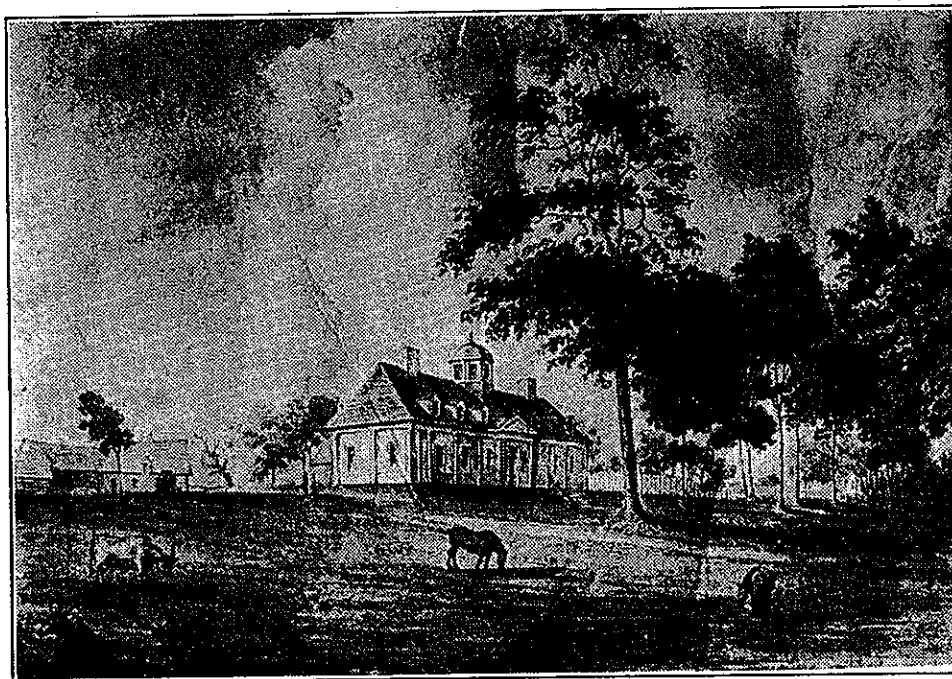


THE HONOURABLE SURVEYOR-GENERAL MAJOR SAMUEL HOLLAND "MANSION"

After years of diligent and intelligent search throughout nearly all the North American Continent, the late Willis Chipman completed the biography with photo of the illustrious Major Samuel Holland, which was published in our 1921 Annual Report.



The above picture of "Holland House" is a copy of an oil painting in the Archives of Canada, in Ottawa, where, very accidentally, your chairman discovered it. It was made in 1783. The Holland House was on the Holland Farm, comprising two hundred acres along St. Foy Road, Quebec.

The Holland Farm had belonged to Mon. Jean Taché, who was a rich merchant of Quebec, and who was the ancestor of Sir E. Taché, a former Prime Minister of Canada, the biography of whose son named Eugene E. Taché, who became a Surveyor for Ontario in 1859, on account of lack of space must be held over until next year.

According to Sir James LeMoine, Major Holland was a gentleman of education and known for his sociable and amiable

qualities. The elite of Quebec were wont to resort to Holland House to enjoy his hospitality, and in 1791 he entertained Edward, afterward the Duke of Kent.

From St. Foy Road in 1870 could be seen a fir tree, known as the "Holland Tree." Under that tree at that time were several graves which had been enclosed with a substantial stone wall with an iron gate. But in 1870 only the foundation remained. Two of the graves had neat marble slabs, with names of Samuel Holland and Samuel Holland, Junior inscribed:—"Here rest Major Surveyor Holland and his son who was killed in a duel by Major Ward of the 60th Regiment."

About five years ago, your Chairman visited the historic "Holland House", and found it had been much changed, enlarged and modernized. The present owner was absent. But the faithful old caretaker could point out only approximately to me the site of the "Holland graves" and "Holland Tree," so completely had they been obliterated.

About this obliteration there is considerable of not very creditable data about "Man's inhumanity to dead man".
