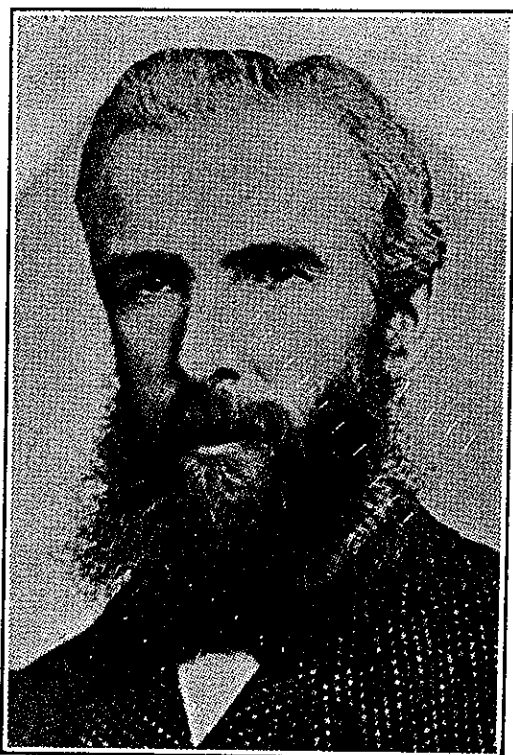


JOSEPH DOUPE

By Col. vanNostrand

Joseph Doupe, C.E. (McGill), O.L.S., D.L.S., and also commissioned surveyor for the Provinces of Manitoba, Saskatchewan, Alberta and British Columbia, was born May 1, 1838, at Napanee, Ont. He came from one of the old Palatinate families,



who, in the latter years of the seventeenth century, harassed by the persecuting bigotry of Louis XIV, emigrated to Ireland and under the auspices of the British Government, settled in the County of Limerick, near Rathkeale.

From this settlement many emigrated to the United States, and during the period from 1827 to 1832 there came to Canada four of the seven sons of Samuel Doupe (1768-1848) and Catherine Shier.

Jacob Doupe (1804-1879) was the first of these, and after his three months' voyage he settled in Camden Township, joining fellow colonists who had preceded him to Upper Canada.

In 1834 he married at Kingston, Ann Shier, a distant relative from County Adare, who had come out in the same sailing vessel.

After seven years of the hardships inseparable from pioneer life in Canada, he prospered, and in 1848, from stone quarried on his own land, built the house in which a grandson and namesake is living today.

He had four children, Samuel (1836-1904), Joseph (1838-1910), Lucy (1840-1909), and Catherine (1843-1871).

Joseph, the subject of this sketch, graduated from McGill in 1861, he and Dr. Robert Bell, later head of the Geological

Survey of Canada, being the only graduates in Civil Engineering that year.

In September of the same year he was articled to Thos. W. Nash, of Kingston, with whom he served one year, and having taken his preliminary in 1858 he passed his final examination in 1863.

In 1866 he married Anne Cranston, eldest daughter of John and Sarah Lewis Cranston, of Leeds, and after a year in Toronto, he moved to Angus, Ont., where he lived for nine years.

After the suppression of the Riel Rebellion, and the reorganization of the surveys under the direction of Lindsay Russell, Surveyor General of Dominion Lands, he was for many years connected with these surveys, coming West each Spring and returning to Eastern Canada generally about Christmas time; going by stage or dog team to some point in Minnesota and thence home by rail.

In the Spring of '75 he visited England and Ireland, and on his return, having been impressed with the opportunities opening up in the West, he moved his family to Winnipeg. He continued in the service of the Federal Government until about 1893, when he engaged in private practice, and was for some time connected with the Land Department of the Canadian Pacific Railway Company, having in the meantime obtained his commission as British Columbia Land Surveyor.

He died suddenly January 30, 1910, and was buried in St. John's Cemetery at Winnipeg.

He was survived by his wife (1834-1928), two daughters living in Winnipeg, and a son, Jacob Lonsdale Doupe, now Chief Surveyor for the Canadian Pacific Railway Western Lines.

He surveyed the township of Raglan in Ontario and the enclosed schedule of Dominion Land Surveys.

List of Dominion Land Surveys

1871

(Survey of Township Boundaries)

South Boundary Township 7, Ranges 1 to 6, inclusive.
 North Boundary Township 8, Ranges 1 to 6, inclusive.
 North Boundary Township 10, Ranges 1 to 4, inclusive.
 East Boundary Townships 7, 8, 9 and 10, Range 3.
 East Boundary Townships 7 and 8, Range 5.

(All west of the Principal Meridian)

1872

(Survey of Township Boundaries)

North Boundary of Township 8, Ranges 7 to 14, inclusive.
 East Boundary of Townships 7 and 8, Range 7.
 Part east Boundary of Township 8, Range 15.
 East Boundary of Township 9, Range 9.
 South Boundary of Township 7, Ranges 7 and 8.
 North Boundary of Township 10, Ranges 9 and 10.
 South Boundary of Township 11, Ranges 9 and 10.
 South Boundary of Township 11, Ranges 1, 2, 3 and 4.

(All west of the Principal Meridian)

1873

(Sub-division of Townships and Survey of Township Boundaries)

Sub-division of Township 8, Range 7.
 West and South Boundaries of Township 8, Range 7.
 East Boundary, Townships 21 and 22, Range 15.
 North Boundary, Township 22, Ranges 15 and 16.
 North Boundary, Township 10, Ranges 15, 16, 17 and 18.
 North Boundary, Township 8, Ranges 15 and 16.
 East Boundary, Townships 9 and 10, Ranges 15 and 17.

(All west of the Principal Meridian)

1874

(Sub-division and Survey of Township Boundaries)

Sub-division of Township 7, Range 7.
 Sub-division of part of Township 7, Range 8.
 East Boundary of Township 7, Range 8.

(All west of Principal Meridian)

1875

(Survey of Township Boundaries)

East Boundary of Townships 21, 22, 23 and 24, Ranges 5 and 7.
 North Boundary of Township 24, Ranges 5 to 9.
 East Boundary of Townships 23 and 24, Range 9.
 East Boundary of Township 10, Range 15.

(All west of Principal Meridian)

1876

(Sub-division and Survey of Township Boundaries)

Sub-division of Township 23, Range 4.
 North Boundary, Township 23, Range 4.
 North Boundary, Township 21, Range 4.
 South Boundary, Township 23, Range 4.

(All east of Principal Meridian)

Sub-division part of Township 7, Range 8, west of Pr. Meridian.

1877

(Sub-division)

Sub-division of Township 20, Range 3.
 Part of Sub-division of Townships 19, 20 and 21, Range 4.
 North Boundary of Township 20, Range 3.
 East Boundary of Township 20, Range 3.
 West Boundary of Township 20, Range 3.

(All east of Principal Meridian)

1878

Survey of part of the Parish of Ste. Agathe.

1879 (Doupe and Drummond)

(Sub-division)

Sub-division Townships 17 and 18, Ranges 23 and 24.
 North Boundary Township 17, Ranges 23 and 24.
 East Boundary Township 17 and 18, Range 24.

(All west of Principal Meridian)

1880

(Sub-division)

Sub-division Township 18, Range 20.
 Sub-division Township 14, Ranges 29 and 30.
 Sub-division Townships 15 and 16, Ranges 27 and 28.
 North Boundary, Township 15, Ranges 27 and 28.
 East Boundary Townships 15 and 16, Range 28.
 East Boundary Township 14, Range 30.
 East and South Boundary of Township 18, Range 20.
 South Boundary of Township 14, Range 29.

(All west of Principal Meridian)

1881

(Sub-division)

Sub-division Township 10, Range 17.
Sub-division Township 13, Ranges 29 and 30.
Sub-division Township 11, Ranges 31 and 32.
North Boundary Township 13, Range 30.
East Boundary Township 13, Range 30.
(All west of Principal Meridian)

1882

(Sub-division)

Townships 49 to 53, Ranges 1 and 2, west of 4th I.M. and township outlines.

1883

(Sub-division)

Townships 37 to 40, Ranges 6 and 7, west of 3rd Meridian.
Townships 52 and 53, Range 3, west of the 4th Meridian.

1884

(Sub-division)

Townships 18 and 19, in Ranges 7 and 8; and Township 18 in Range 9, east of the Principal Meridian.

1885

Sub-division of Township 18, in Ranges 6 and 7, Township 18 in Ranges 8 and 9, east of the Principal Meridian: and Micrometer Survey of North Saskatchewan River—89 miles.

1886

Correction and inspection of surveys.

1887

Survey of Main Street, Winnipeg.

1888

Survey of Canadian Pacific Railway Station grounds, Palliser, B.C.

1890

(Sub-division)

Sub-division of Townships 23 and 24, in Range 23, west of the Principal Meridian.

1893

(Sub-division)

Sub-division of Township 40, Range 21, Townships 38, 39 and 40, Range 22, all west of 4th Meridian.

1894

Traverse of Portage Creek, in the south-east quarter of Section 29, Township 13, Range 6, all west of the Principal Meridian.

1906

Re-survey, Township 6, Range 14, west of 2nd Meridian.

1909 (Deceased)

Re-surveys in Township 13, Range 6; Townships 13 and 14, Range 7 and Township 14, Range 8, west of Principal Meridian.

own-

lian.

8 in

ship
and
-89

ser,