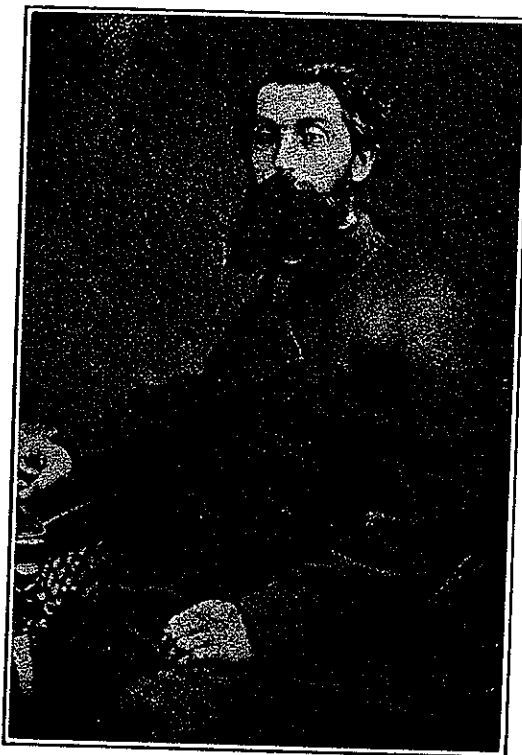


THOMAS WALTER COOPER, 1832-1879

By E. T. Wilkie

Thomas Walter Cooper, born April 8th, 1832, his parents then living in Ipswich, Suffolk County, England, came to Canada when very young, the family settling at or in the vicinity of Guelph, where he was brought up and educated. He studied



Civil Engineering and obtained his commission as Provincial Land Surveyor on October 8th, 1859. He was engineer for the Guelph water works and made a plan of the City of Guelph which is not dated, but was probably made about 1875, he built the road from Guelph to Erin; and looked after the construction of the first drill shed built in Guelph. He was occasionally consulted by Frank Shanley who was City Engineer of Toronto 1876-1880. On March 14th, 1879, he met with an accident on the railway, when going home at night, and died the next day, and was buried in the cemetery at Guelph.

In 1860 he married Elizabeth Fraser, the youngest of an Edinburgh, Scotland, family, she having four brothers and one sister. Some time after Mr. Fraser's death, three of the boys, the two girls and their mother came to Canada in 1848. Mr. Cooper had a family of ten, the youngest being born after his death. Later the family all went to the United States, where five of whom Charles, Emma, Arthur, George and Kate are still living, and all, except Emma, are married and have families. Mrs. Cooper died in Detroit, Mich., on October 4th, 1921.