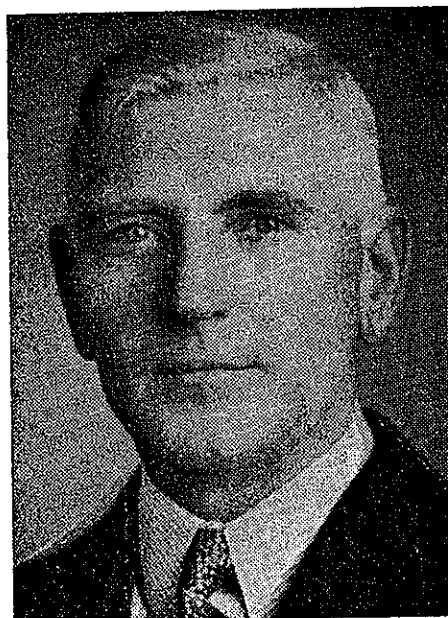


ASSOCIATION OF ONTARIO LAND SURVEYORS



EDWARD CAVELL was born in Owen Sound, Ontario, September 17th, 1884. He received his early education in Owen Sound, and after graduating from the University of Toronto in Civil Engineering (1907) was engaged extensively in Land surveys, Town Planning and Civil Engineering.

In 1908, he was engaged in surveys throughout western Canada, locating the Trans-Canada right of way and townsites for the Canadian Pacific Railway, returning to Toronto in 1910, he entered private survey practise with W. H. Browne, and later formed the firm of Browne & Cavell.

In 1930 he commenced the original development surveys of the reclamation project by Dutch settlers on the Holland Marsh near Bradford, Ontario. Other Municipal projects included surveys of rural roads for the Toronto & York Roads, Mining tunnel for rock Quarries, Magnetometer control surveys for Oil Companies.

After suffering a severe heart attack in December of 1959, he formed a partnership with W. Jackson in 1960, as Browne & Cavell Associates.

His first wife (Florence May Wescott) died in 1945, and his second wife (Agnes E. Burnett) died suddenly while he was recovering in hospital in 1959.

REPORT OF THE BIOGRAPHICAL COMMITTEE

"Ed" was a faithful attendant at the Annual Meeting of the Association of Ontario Land Surveyors where he held the esteem and respect of all. He served faithfully on many standing Committees, on the Council of Management and for his faithful service to the Association was honored by being elected President in 1937.

He was a member of the Professional Engineers Association of Ontario and the Runnymede Masonic Lodge.

He is survived by a son, Frank of Port Credit, Ontario; a daughter, Lorraine of Toronto and a brother, William of Owen Sound.

His death occurred suddenly at Owen Sound December 19th, 1960 while visiting with his brother.

17th,  
grad-  
was  
neer-

a, lo-  
n Pa-  
urvey  
vne &

f the  
near  
rural  
arries,

ormed  
ciates.

econd  
ospit-