

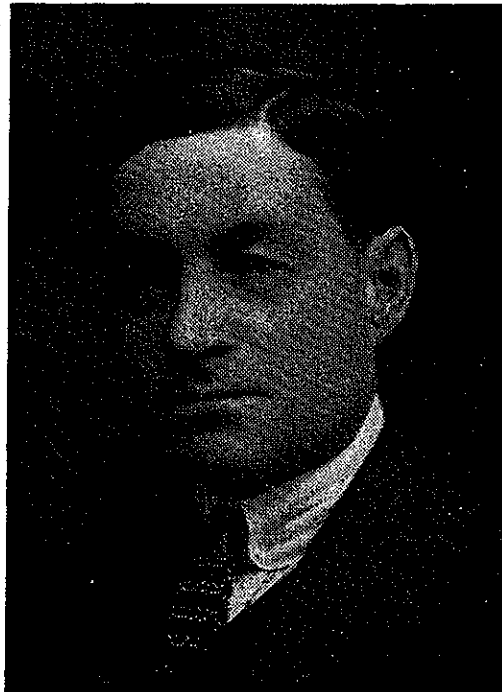
death. The Listowel practice was a busy one in the growing times of the Bruce Peninsula, though interspersed with mining claim surveys in the early days of the Cobalt mining camp.

Mr. Bolton left no immediate survivors as parents, wife, and only sister, had predeceased him and there were no children. The older members of our Association will remember him as a regular attendant of our annual meetings, and as a man of quiet and genial disposition. He was a member of the United Church of Canada.

THOMAS HENRY BYRNE

Grad. R.M.C., M.A.P.E. (Ont.)

The Byrne family was one of those whose roots were deeply imbedded in early Ottawa history, and the subject of this sketch was born there February 7th, 1880, to John Thornton Byrne and Mary Mavety Byrne.



In Ottawa schools he received his earlier education — Kent Street Public and Lisgar Street Collegiate. He then entered the Royal Military College at Kingston and graduated therefrom in 1900. During his course at this latter institution he became associated with three fellow students with whom in later life he was to be connected: two of these, W. B. Lindsay and Victor Anderson, both to become Major-Generals in Canada's Army during World War I. The third was Frank Elliott Patterson who, on April 21st, 1909, became an Ontario Land Surveyor and with whom our subject later became associated in the Surveying-Engineering partnership of Patterson and Byrne. Mr. Patterson's death

preceded that of Mr. Byrne by some years.

Subsequent to his graduation from R.M.C., our subject became actively engaged in engineering:

1902-3—Asst. Engr. construction Algoma Central Ry.

1903—Asst. Eng. location, Railway, New Brunswick.

1904—Asst. Engr. construction Decew Falls power plant.

1905-7—Asst. Engr. construction Kakabecka Falls power plant.

COMMITTEE ON BIOGRAPHY

1908—Asst. Engr. construction Montreal River power plant.

1909-15—Admitted to practice as an Ontario Land Surveyor February 24th, and entered the partnership of Patterson & Byrne, in which he continued in private practice as an engineer and surveyor and also Engineer for Carleton County on bridge construction in 1914.

1915—Enlisted as Captain in 38th Battalion C.E.F., wounded "Desire Trench" Nov. 18th, 1916; discharged "permanently disabled" April 20th, 1918.

Upon his return to Canada he became a member of the Association of Professional Engineers of Ontario; resumed activities in the old partnership; and in the employ of Carleton County resuming his role in bridge engineering, later as road superintendent and also consulting engineer for united Counties of Prescott and Russel.

While his overseas disablement precluded further military service, he was still fit and able to carry on his professional duties. However, a three months illness resulted in his death on April 3rd, 1943. This was a shock to his very many friends in the Ottawa valley who knew and respected him so highly. His close survivors are his widow the former M. Jean McClelland of Ottawa, and a brother John H. Byrne, M.E.I.C., also of Ottawa. The soldier's body was laid to rest in Pinecrest Cemetery.

HENRY STANLEY CARPENTER

O.L.S., D.L.S., S.L.S., M.E.I.C., P.Eng. (Alta.) B.A.Sc.

Mr. Carpenter, a member of our Association (registered and withdrawn) died in Regina, Saskatchewan, on December 11th, 1950, in his 77th year. He was a man of very considerable note in his chosen profession of engineering and surveying, though retired from active practice since superannuation in 1939.

Born in Collingwood, Ontario, February 8th, 1874; he there received his public and high school education. This was followed by a Science course at Toronto University, from whence he graduated in Civil Engineering with the degree of B.A.Sc. On February 25th, 1899, he was admitted to practice as an Ontario Land Surveyor; in 1901 he obtained his Dominion Land Surveyors' license; and later in 1909 his Saskatchewan Land Surveyor's degree. In addition he was a Life Member of the Engineering Institute of Canada; an honorary B.A.Sc. of the University of Saskatchewan; and a Life Member of the Saskatchewan Association of Professional Engineers.

His professional life may be summarized:

1900-1905—Department of Railways and Canals, reconnaissance surveys and construction Trent Valley Canal.