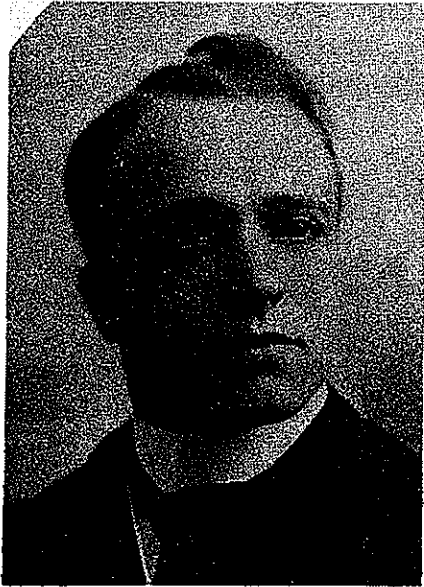


ASSOCIATION OF ONTARIO LAND SURVEYORS

CLAYTON ELGIN BUSH B.A.Sc., O.L.S., D.L.S., P. Eng.



Mr. Bush was born August 14th, 1884, at Toronto, son of Elgin and Minnie Alberta (Reynolds) Bush. He attended public school and Harbord Collegiate, and graduated in civil engineering at Toronto University in 1909.

He wrote the music to the Varsity song, The Blue and White, and was founder and president of the first Glee Club at the University.

After graduating, he entered a partnership in an engineering and survey firm in Calgary. He laid out the first racecourse in Calgary and made a number of surveys in the Dunvegan and Peace River districts.

In 1914, Mr. Bush enlisted for service in the First World War. He spent three years in France, rising to the rank of major, and was responsible for the establishment and operation of a military engineering training camp in England.

After the war he was one of the first resident engineers with the Ontario Department of Highways and was responsible for the development of No. 10 Highway from Port Credit to Owen Sound.

Later he joined the Ontario Hydro-Electric Power Commission and worked on the early St. Lawrence Seaway and hydro development surveys. He also made the original ground surveys and reports for the Ogoki and Long Lac projects diverting water from James Bay to the Great Lakes.

Following a number of years with Ontario Hydro, Mr. Bush re-entered private survey practice, contracting for a number of highway surveys in Northern Ontario.

In 1945 he joined the Conservation Authorities Branch, now part of the Department of Lands and Forests. He was head of the hydraulic section and in later years served as a consultant to the branch until his illness.

Mr. Bush was a member of St. Thomas' Anglican Church and a life member of the Engineering Institute of Canada and the Canadian Corps Cyclists Battalion Association.

REPORTS

Mr. Bush died 17th March, 1963, at Toronto. He was survived by his wife, the former Estelle Forbes, a son Edward, a grandson, Paul Edward of Ottawa, and a brother, Elwood G. Bush of Toronto.

r.
14th,
n and
. He
rbord
ll en-
1909.

arsity
d was
: Glee

part-
urvey
e first
ade a
an and

War.
d was
neer-

th the
velop-

lssion
pment
ts for
Bay to

sh re-
ghway

w part
raulic
h until

and
nadian