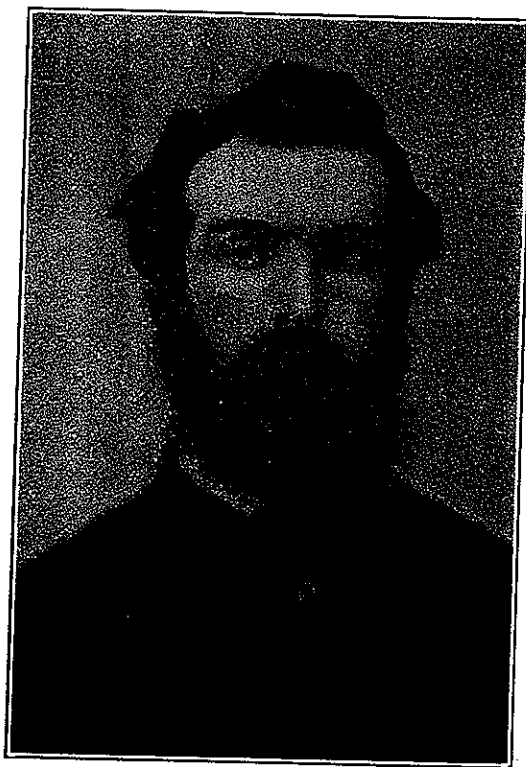


JESSE NUNN BOLTON

Was born April 21st, 1839, the eldest son of Samuel Bolton, of Bolton, Ont., and his wife (née Sophia Nunn).

Both of his parents were born in England, his father in Norfolk County and his mother in Suffolk County.



His grandfather, James Bolton, of Norfolk County, came to Canada in 1818, and about 1819 settled at what later was called Bolton's Mills, and later became the village of Bolton, Ont.

As a young man he taught school for a time, then after his apprenticeship with R. W. Hermon, P.L.S., for three years was appointed a Land Surveyor on the 6th of April, 1867.

He carried on surveying most of his life in and around Bolton, which on its incorporation he made a map of, his services often being required from long distances away. He also carried on a printing office in Bolton, and for a time published a newspaper there.

He was married, February 1st, 1868, at Bolton, to Martha Hickman, born in England, October 6th, 1840, daughter of D. E. Edward Hickman, an Englishman, who had come to Bolton in about 1843.

Of this marriage three children were born; Mary, born Sept. 24th, 1870, died February 15th, 1877; Martha, born October 7th, 1872, died February 4th, 1875; and Samuel Edward, born February 15th, 1875, and now living in Ottawa, where he is Supreme Court Reporter.

The wife of Jesse Nunn died January 1st, 1887, and on January 17th, 1888, he married Mary M. Steele, daughter of

John Cousins Steele, of Newtonbrook, Ont., who still survives him.

The following relatives also were Surveyors: His cousin, Lewis Bolton, of Listowel, Ont., now deceased; Ellsworth, son of the latter still practising in Listowel; and Ernest Bolton, son of a cousin, Rev. Charles Bolton, of Wiarton, Ont., who was killed in battle in France in 1916.

Jesse Nunn Bolton moved to Toronto in 1892, and died there on December 6th, 1901.

He was buried at Bolton in the beautiful Laurel Hill Cemetery there, the survey and plan of which he had made.