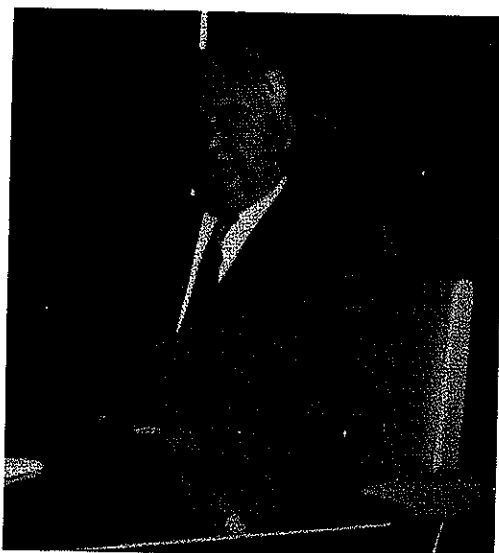


REPORT OF THE BIOGRAPHY COMMITTEE



JOHN HILLIARD BEATTY
1900-1974

John Hilliard Beatty was born in Midland on July 27th, 1900 to William and Martha Beatty. He received his early education in Midland and attended Albert College in Belleville. He attended the University of Toronto and graduated in 1926 with a degree in Engineering. Following his graduation, he articulated with the firm of Unwin, Murphy and Esten and was commissioned as an Ontario Land Surveyor on April 16th, 1927.

In 1928, he was appointed Assistant County Engineer for Dufferin County and in 1932 was advanced to County Engineer. In 1941, he was appointed as Grey County Engineer and moved to Owen Sound. In 1942, he joined the Canadian Army and served with the Royal Canadian Engineers until he was discharged in 1946 as a Major. He then returned to his position with Grey County until his retirement in 1965. During his career as Grey County Engineer, he did a great deal of consulting and survey work for individual townships as well as for the County.

He was married to the former Mary Campbell who predeceased him in December of 1973. He is survived by one daughter, Barbara (Mrs. Charles Huke), and two granddaughters, Carol and Linda. He is also survived by his brother, Roy, of Toronto.

In fraternal life, he was a member of Harris Masonic Lodge of Orangeville and of Branch 6 of the Royal Canadian Legion of Owen Sound. He was also a member of St. Andrews Presbyterian Church in Owen Sound.

In social life, he belonged to the Owen Sound Granite Club and to the Officers Mess of the Owen Sound Armouries.

He retired from active practice on January 1st, 1969, and his long and distinguished career came to a close with his death on May 16th, 1974.