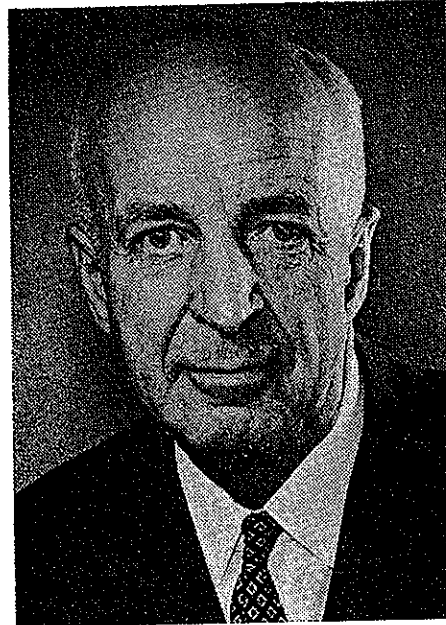


REPORT OF THE COMMITTEE ON BIOGRAPHY



THOS. HOLMES BARTLEY, B.A.Sc., D.L.S., O.L.S., A.M.E.I.C.
1889-1964

On August 10, 1964, Thomas H. Bartley passed away at the Queen Elizabeth Hospital at Toronto, Ontario. Mr. Bartley was born in Toronto in 1889. He was the son of Rev. and Mrs. T. E. Bartley.

He graduated as a Civil Engineer from the University of Toronto in 1912 and then obtained his commission as a Dominion Land Surveyor. On February 11, 1915, he was commissioned as an Ontario Land Surveyor. His early survey work was performed in Ontario, followed by such activity in Western Canada. Mr. Bartley went on the inactive list of surveyors of our Association, in the year 1943.

For several years he was Assistant Controller of Surveys, Topographical Branch, Department of the Interior of the Federal government. Later he became Senior Industrial Research Engineer of the Commercial Intelligence Branch of the same Department.

In 1931 he joined the Toronto Industrial Commission, of which he became General Manager in 1937. While with the Commission he is considered to have contributed more than any other one person to the industrial growth and development of Metropolitan Toronto. He is said to have been instrumental in attracting two hundred and thirty new industries to the area.

He retired in 1954 from the Toronto Industrial Commission, but became their special consultant. He also was associated as consultant with Don Mills Development Ltd. and with Erin Mills Development Ltd. He was winner of the 1961 Canadian Industrial Development award for his distinguished contribution to the industrial development of Canada. The Trade and Industry Branch of the

ASSOCIATION OF ONTARIO LAND SURVEYORS

Department of Planning and Development of Ontario recognized his efforts with a citation by Colonel F. J. Lyle, O.B.E., "for a most distinguished contribution to the Industrial Development of Canada."

Mr. Bartley was a member of the Toronto Rotary Club, the Toronto Board of Trade, the National Club, and the United Church of Canada. From childhood he enjoyed his vacations on his island in Georgian Bay. He was buried in Parklawn Cemetery, Toronto.

He is survived by his wife, the former Flora B. Lowe, his sister, Miss Gladys M. Bartley, his two daughters, Mrs. Klaus R. Kruger and Mrs. John H. Cooper, and four grand-children.

EDC

move
fessic
recei

Bow
Wool
cated
he w
Pract

his fa
on A
certifi
vices
Interi
surve
McKe

J
and v
1917,
with
into p
the su