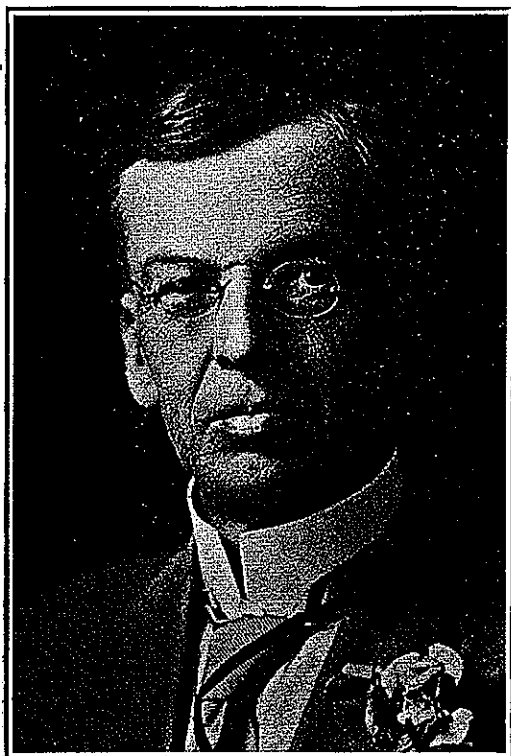


## WILLIS CHIPMAN

Prepared and Edited by Col. A. J. vanNostrand

Willis Chipman was descended from an old English family, dating back to about the time of William the Conqueror.

John Chipman, born near Dorchester, England, sailed from Barnstable, Devon, when seventeen years of age, and landed at Boston Mass., 14th July, 1631. He is recorded as being the first one of the family to seek a home in America, and it is said that up to 1850 there was not a Chipman on this continent who was not descended from him.



In 1646 he married Hope Howland, born in Plymouth, Mass., 1629; died 1683; nine children were born of this union, the eldest son being Samuel Chipman, born in Barnstable, Mass., 15th April, 1661. John Chipman attained prominence in his new home, Barnstable, being invested with the authority of a magistrate as well as being one of the foremost in church matters. His death occurred in 1708.

Samuel Chipman was born in Barnstable, Mass., 15th April, 1661. On 27th December, 1686, he married Sarah, the twelfth child of Elder Henry Cobb. She was born 10th March, 1663, and died 8th January, 1743. They had a family of eleven children, the eldest son being Thomas Chipman, born 17th November, 1687. Samuel Chipman died in 1723.

Thomas Chipman was born in Barnstable, Mass., 17th November, 1687. On 26th April, 1711, he married Abigail Lothrop, a descendant of Rev. John Lothrop. Their family consisted of ten children, the sixth son being Amos Chipman, born about 1727. Thomas Chipman died at Groton, Conn., 5th August, 1752.

Amos Chipman was born about 1727. For a time he lived in Salisbury, Conn., and then moved to Sunderland, Vermont, of which town he was one of the earliest settlers. On 18th October, 1749, he married Sarah Daggett, of Lebanon, Conn., and of this union seven children were born, the fourth and youngest son being Ammi, born 7th February, 1764. Amos Chipman died at Salisbury, Conn., after 1764.

Ammi Chipman was born at Salisbury, Conn., 7th February, 1764. In about the year 1774, the family removed to Sunderland, Vermont, and about the year 1785 Ammi married Sarah Evart, born at Sunderland, Vermont, 8th December, 1764. Five children were born to them in Vermont, and two others in Canada, the third son, Harry, being born 15th February, 1790. In the winter of 1795 Ammi Chipman with his wife and five children and his elder brother, Barnabas Lothrop Chipman and his family, left their homes at Sunderland, Vermont, and journeyed to Upper Canada. Their route was via Lake Champlain to St. Johns, thence via Montreal to Elizabethtown, one hundred and twenty-five miles up the St. Lawrence, where their families remained until the next year, when they removed to the Township of Bastard, County of Leeds, then opened to settlement. Ammi Chipman died at Harlem, Ontario, 10th December, 1808.

Harry Chipman was born at Sunderland, Vermont, 15th February, 1790, and came to Canada as above noted, with his parents, in 1795. He married (first) about 1811, Roxy Day, who died 19th June, 1812, leaving no issue. On 2nd April, 1815, he married Lucy Lillie of Elizabethtown, Ontario, born 23rd January, 1792. Surviving them were two children, Lewis, born 17th March, 1820, and Julia Ann, born 17th March, 1822, two other children having died in infancy. About the year 1811, Harry Chipman purchased part of lot 18, Concession V, Township of Bastard, where he carried on farming until 1876. He gave his children an education beyond the requirements of the period. His death occurred at Easton's Corners, Ontario, 5th March, 1880.

Lewis Chipman, only son of Harry Chipman, was born in Harlem, Ontario, 17th March, 1820. His education was obtained in the public schools, and later at Ogdensburg Academy. He taught school for many years and held several public offices, including those of Inspector of Public Schools and Clerk of the Township of Bastard. In 1876 he moved to Brockville, and was appointed City Treasurer in 1881, which office he held until his death, 30th July, 1882. On 5th October,

1852, he married Abigail Jane, youngest daughter of Jesse Delong, of Elgin, Ontario, who was born 22nd August, 1831, and died 22nd October, 1896. Their children were Willis Chipman, born 1st October, 1855, and Elma, born 14th November, 1859, and died 31st July, 1886.

Willis Chipman, the subject of this sketch, was born 1st October, 1855, in Elgin, Ontario. After attending the Athens public school and Weston High School, he entered McGill University. From that institution he graduated in 1876, with first rank honors in Civil and Mechanical Engineering. Following his graduation Mr. Chipman became a high school teacher, serving as mathematical master on the staff at Napanee, and not long afterwards he entered the service of the Geological Survey of Canada, thence becoming assistant engineer on the construction of the Toronto waterworks. Following this he entered the profession of Land Surveying and became articled to G. B. Abrey, of Manitoulin, for one year, during which he was on surveys in the then Canadian Northwest Territories, obtaining his commission as Dominion Land Surveyor 21st May, 1881. He then took a course of study under P. S. Gibson, of Willowdale, and was granted his commission as Provincial Land Surveyor for Ontario on 4th October, 1881. In November, 1881, Mr. Chipman commenced practice in Brockville as a Land Surveyor and Civil Engineer, and later served as City Engineer for that city. For some years he carried on the dual practice, having from 21st January, 1889, to 21st January, 1891, a partnership with the late Lieut.-Col. B. J. Saunders, C.E. and O.L.S. T. H. Wiggins, C.E. and O.L.S., was also at one time a partner of his.

Seized of the importance of old records in surveying work, Mr. Chipman acquired the field notes of many by-gone surveyors, and these are now in the hands of his surveying successors in Brockville.

During his practice in Land Surveying, he served with the Department of the Interior from May to October, 1883, in surveys in the Northwest Territories. He made the following subdivision surveys for the Department of Crown Lands (Ontario): 1884, Township of Mulock; 1886, Township of French; 1886, Township of Stewart, and in 1890, Township of Lockhart, all in the district of Nipissing. A plan of the town of Brockville was prepared by him in 1883-4.

Realizing the disadvantages both as regards the members of the profession and the public—their clients—arising from the lack of cohesion amongst the Land Surveyors, Mr. Chip-

man undertook the task of organizing the surveyors for Ontario. After much correspondence, a meeting of representative Surveyors was held in Toronto, on 25th February, 1886, and the Association of Provincial Land Surveyors was formed, with George B. Kirkpatrick as president, Alex. Niven as vice-president, and Willis Chipman as secretary-treasurer, which office he continued to fill until 1890. In 1892 the Association became incorporated, and assumed the position it still holds, Mr. Chipman being, as was to be expected, one of the most active members in this transition. He held the office of vice-president in 1895, and that of president in 1896, and up to the end of his life he did not cease to labor for the Association, being mainly responsible for the collection of data and the compiling of the two hundred and seventy-four biographical sketches of former surveyors, published in the Annual Proceedings during the years 1886-1928, as well as originating the Repository Committee, and compiling, after much research, a map of the Polar region. The biographical sketches referred to, contain much useful matter, the value of which will continue to increase as time goes on.

To meet the requirements of his increasing practice, he closed the Brockville office, and removed to Toronto in 1894.

In the field of engineering, Mr. Chipman won a dominion-wide reputation, particularly in the branches relating to waterworks and sewerage works, his practice extending from Halifax, N.S., to Victoria, B.C. He was also a member of the commission appointed in 1911 to enquire into the situation as to the Toronto waterworks collapse, and in 1893 he served as president of the Association of Health Officers of Ontario. Amongst his published articles on Sanitary Engineering are "Ontario Waterworks System" (Canadian Engineer, about 1898), "The Separate System of Sewerage and Storm Water Drainage" (Proceedings Canadian Society of Civil Engineers), "London Sewerage System" (Canadian Engineer), and "Oakville Waterworks Auxiliary" (Canadian Engineer), and he is regarded as the originator of the separate system for sanitary and storm water sewers in Canada. On 1st April, 1910, George H. Power, who had acted as his assistant from September, 1901, became his partner, and the firm continued practice as Chipman and Power until 1st October, 1924.

Some of the cities and towns which were dealt with as to sanitary services, by Willis Chipman, or by Chipman and Power, are the following:

*Maritime Provinces*

Halifax, N.S., Waterworks Improvements, Report, Works carried out.

Pictou, N.S., Sewerage, Report.

Moncton, N.B., Waterworks Improvements, Report.

Fredericton, N.B., Sewerage, Report.

Newcastle, N.B., Waterworks and Sewerage, Construction.

Dalhousie, N.B., Waterworks and Electric Plant, Construction.

Campbellton, N.B., Sewerage, Construction.

*Province Quebec*

Sherbrooke, Waterworks Improvements, Report.

Model City (Mount Royal, Montreal), Waterworks and Sewerage, Report.

*Province Ontario*

Cornwall, Sewerage and Waterworks, Construction, Report.

Brockville, Waterworks Improvements and Sewerage, Report, Construction.

Toronto Junction, Sewerage, Construction.

Gananoque, Waterworks and Sewerage, Construction.

Smith's Falls, Waterworks and Sewerage, Construction.

Carleton Place, Waterworks and Sewerage, Report.

Renfrew, Waterworks and Sewerage, Construction.

Pembroke, Waterworks, Construction.

Bowmanville, Waterworks, Sewerage and Sewage Disposal, Construction.

Oshawa, Waterworks and Sewerage, Construction.

Picton, Waterworks and Sewerage, Report.

Peterborough, Sewerage, Sewage Disposal, East Ward, Construction.

Lindsay, Sewerage, Report.

Barrie, Waterworks, Report.

Barrie, Sewerage, Construction.

Orillia, Sewerage and Sewage Disposal, Construction.

Midland, Waterworks and Sewerage, Construction.

Parry Sound, Waterworks Improvements and Sewerage, Reports.

Gravenhurst, Sewerage, Report.

Bracebridge, Sewerage, Report.

Collingwood, Waterworks Improvements, Report.

Owen Sound, Waterworks Improvements, Report.  
Orangeville, Waterworks, Construction.  
Toronto, Waterworks Improvements, Report.  
Oakville, Waterworks, Construction.  
Burlington, Waterworks and Sewerage, Construction.  
Hamilton, Waterworks Improvements, Report.  
St. Catharines, Sewerage, Report.  
Niagara Falls, Sewerage, Report.  
Thorold, Waterworks and Sewerage, Construction.  
Welland, Sewerage, Report.  
Bridgeburg, Waterworks, Construction.  
Dunnville, Sewerage, Construction.  
Simcoe, Waterworks, Construction.  
Simcoe, Sewerage and Sewage Disposal, Report.  
Brantford, Sewerage, Construction.  
Brantford, Waterworks Improvements, Construction.  
Woodstock, Sewerage, Report.  
London, Sewerage and Sewage Disposal, Construction.  
Wallaceburg, Waterworks and Sewerage, Construction.  
Petrolia, Waterworks, Construction.  
Guelph, Sewerage and Sewage Disposal, Construction.  
Galt, Waterworks, Construction.  
Kitchener, Sewerage and Sewage Disposal, Construction.  
Stratford, Waterworks Improvements, Report.  
Goderich, Waterworks, Construction.  
Goderich, Sewerage, Report.  
Port Elgin, Waterworks, Construction.  
North Bay, Sewerage, Report.  
Sault Ste. Marie.  
Sudbury, Sewerage, Construction.  
Chapleau, Waterworks, Construction.  
Port Arthur, Waterworks and Sewerage, Construction.  
Fort William, Sewerage, Report.

*Western Provinces*

Portage la Prairie, Man., Waterworks and Sewerage,  
Construction.  
Dauphin, Man., Waterworks, Sewerage and Sewage Dis-  
posal, Construction.  
Neepawa, Man., Waterworks, Sewerage and Sewage Dis-  
posal, Construction.  
Moosomin, Sask., Waterworks and Sewerage, Construc-  
tion.  
Moose Jaw, Sask., Waterworks, Sewerage and Electric  
Plant, Construction.

Weyburn, Sask., Waterworks and Sewerage, Construction.  
 Estevan, Sask., Waterworks and Sewerage, Construction.  
 Swift Current, Sask., Waterworks Improvements, Report.  
 Kamsack, Sask., Waterworks, Sewerage and Sewage Disposal, Construction.  
 Canora, Sask., Waterworks, Construction.  
 Yorkton, Sask., Waterworks, Report.  
 Humboldt, Sask., Waterworks, Sewerage and Sewage Disposal, Construction.  
 Watrous, Sask., Waterworks, Construction.  
 Saskatoon, Sask., Waterworks, Sewerage and Electric Plant, Construction.  
 Prince Albert, Sask., Waterworks and Sewerage, Construction.  
 North Battleford, Sask., Waterworks, Sewerage and Electric Plant, Construction.  
 Kerrobert, Sask., Waterworks, Construction.  
 Edmonton, Alta., Waterworks and Sewerage, Construction.  
 Edmonton, Alta., Waterworks Improvements, Report.  
 Edmonton, Alta., Power Development, Report.  
 High River, Alta., Waterworks and Sewerage, Construction.  
 Fort McLeod, Alta., Waterworks, Report.  
 Lethbridge, Alta., Waterworks and Sewerage, Construction.  
 Kamloops, B.C., Waterworks Improvements, Report.  
 New Westminster, B.C., Waterworks Improvements, Report.  
 Victoria, B.C., Sewerage, Report.  
 William Head, B.C., Waterworks, Construction.

In his quest for further information in his calling, he visited the New England States in 1885, to inspect and study waterworks and sewerage problems; and in February and March, 1900, he studied in England and Scotland, waterworks, sewerage and sewage disposal systems. In 1891 he made a study of the sanitary systems in Denver, Seattle and San Francisco.

Amongst the appointments and offices held by Mr. Chipman in connection with Civil Engineering, may be mentioned his election as a member of the Canadian Society of Civil Engineers, in 1887, and service on the Council for three terms. During the transition of that body to the Engineering



Institute of Canada, he was one of the prominent members of the committee of fourteen engineers who were charged with the drafting of the constitution and by-laws. Later, he was one of the most active members of the committee to whom the drawing up of the bill for the creation of the Professional Engineers of Ontario was entrusted.

The Engineers' Club of Toronto is another professional body which owes its inception and growth largely to the initiative and energy of Mr. Chipman.

His alma mater was in his warmest thoughts, and he was a member of the Graduates' Society of McGill, and a frequent contributor to its quarterly publication, "The McGill News."

He was also a member of the American Society of Civil Engineers and of the American Waterworks Association, throughout his active career.

Aside from his activities in professional matters, Mr. Chipman devoted much time to research in the history of the province, particularly that of Leeds County, and as a member of the Ontario Historical Society, he made valuable contributions to its "Proceedings." He also made a study of ornithology, and was well versed in the subject.

Willis Chipman married (first) 5th May, 1880, Angeline Denison—who died 14th August, 1883, leaving a son, Harry D., now of Rhodesia, South Africa, and a daughter, Julia Angeline, of Toronto; (second) Elizabeth Bray Finlayson, the surviving issue of this union being Gertrude Elma, wife of Charles W. Pennington of Dundas, and Lucy Kathleen, wife of Arthur S. Runciman of Montreal West. Three other children predeceased their father; and (third) Edith Fenton Scott, who survives her husband.

In religion, Mr. Chipman was an Anglican, and, in politics, a Liberal.

Despite increasing weakness through illness, he continued to carry on as chairman of the Biographical Committee almost to the time of his death on 3rd January, 1929. He was interred in the old family plot at Brockville. Fittingly, his ring denoting "The Calling of an Engineer" was buried with him.

action.  
action.  
report.  
wage

e Dis-

lectric

Con-

and

instruc-

ort.

Con-

instruc-

t.

ments,

ng, he

l study

y and

works,

nade a

d San

. Chip-

ntioned

? Civil

terms.

neering